



design Q



As part of the new home building process, Broadview Homes offers every home buyer a three-hour personal consultation with a Certified Interior Decorator in the 4,000 square foot design centre, **designQ**. Our Consultants assist purchasers in choosing interior and exterior selections for their new home.

designQ offers all popular upgrades on display, and Consultants are able to quote any upgrades of product selection after the consultation.

Located at the Qualico head office in Sage Creek, **designQ** holds an open house every Thursday, 9a – 4p.



broadview
HOMES

Elevation E- Concept Only



BroadviewHomesWpg.com
204 224-6155

Plans and prices are subject to change without notice. Exterior renderings are for marketing purposes and may vary from actual standards included. The builder reserves the right to change material or specifications without notice, but guarantees that change will be of equal or greater value. Room dimensions are approximate. Windows in cantilevers and size of cantilevers are subject to side yard restrictions. Garage dimensions are exterior. Illustrations are artist concepts and may vary. (12/2017)



Broadview Homes

Broadview Homes has been building new family homes in the Winnipeg market for over 30 years. We offer a wide variety of modern floor plans and design elements providing customers with many options to fit their needs and lifestyle. Choosing a Broadview Home is a great fit for homebuyers who are looking for affordability without any sacrifice to quality. Broadview Homes provides over 30 new home plans to select from ensuring we have many great options for every customer.

At Broadview Homes we are committed to providing a great experience for our customers throughout the selection and building process continuing after moving into the home. Our experts are here to answer your questions and make your new home process as quick and easy as possible at every stage. Our homes are available in many family friendly communities throughout Winnipeg for you to choose from. Start your next move now with Broadview Homes!

THE DALTON

Bedroom: 3
Bath: 2
Total: 1,229 SQ FT

DG 21 - 17
Elevations: B E

YOUR FAMILY IS IN GOOD HANDS.

A QUALICO Company

The Dalton

Bedroom: 3

Bath: 2

Total: 1,229 sqft

HOME FEATURES

- Front Attached Garage
- Covered Front Porch on Elevation E
- Large Galley Style Kitchen with Island With Eating Lip and Double Sinks
- Master Bedroom Includes a Private Ensuite
- Rear Patio Door off of Dining Room
- Open Concept Layout Great for Entertaining
- Spacious Great Room at Front of Home
- Lower Level of Home Optional to Develop

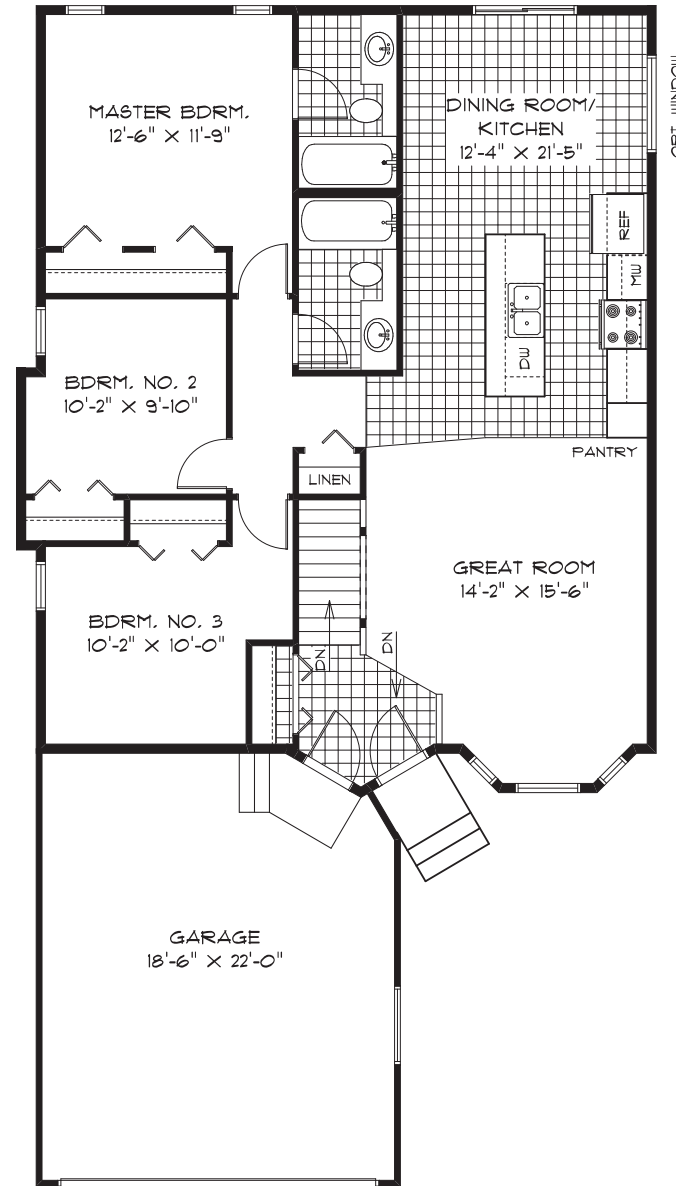
ELEVATIONS



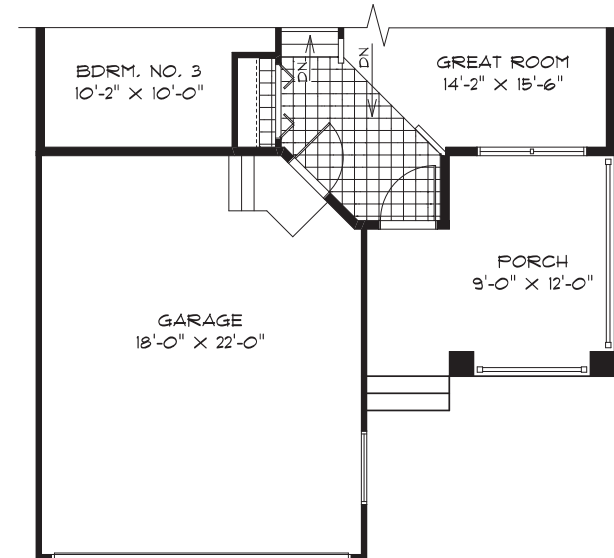
Elevation B



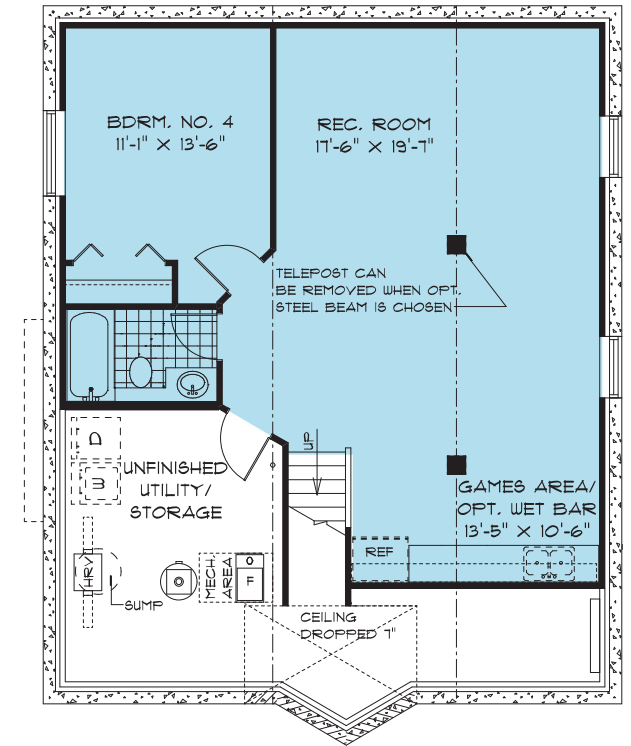
Elevation E



MAIN FLOOR PLAN
(1229 SQ. FT.)



PARTIAL MAIN FLOOR PLAN - ELEVATION 'E'
(1235 SQ. FT.)



OPTIONAL LOWER LEVEL FLOOR PLAN
(FINISHED AREA 126 SQ. FT.)

Purchaser Initials: _____