



# THE GRAYSON



As part of the new home building process, Broadview Homes offers every home buyer a three-hour personal consultation with a Certified Interior Decorator in the 4,000 square foot design centre, designQ.

Our Consultants assist purchasers in choosing interior and exterior selections for their new home.

designQ offers all popular upgrades on display, and Consultants are able to quote any upgrades of product selection after the consultation.

Located at the Qualico head office in Sage Creek, designQ holds an open house every Thursday, 9a-4p.



## BROADVIEW HOMES

Broadview Homes has been building new family homes in the Winnipeg market for over 30 years. We offer a wide variety of modern floor plans and design elements providing customers with many options to fit their needs and lifestyle. Choosing a Broadview Home is a great fit for homebuyers who are looking for affordability without any sacrifice to quality. Broadview Homes provides over 30 new home plans to select from ensuring we have many great options for every customer.

At Broadview Homes we are committed to providing a great experience for our customers throughout the selection and building process continuing after moving into the home. Our experts are here to answer your questions and make your new home process as quick and easy as possible at every stage. Our homes are available in many family friendly communities throughout Winnipeg for you to choose from. Start your next move now with Broadview Homes!



Plans and prices are subject to change without notice. Exterior renderings are for marketing purposes and may vary from actual standards included. The builder reserves the right to change material or specifications without notice, but guarantees that change will be of equal or greater value. Room dimensions are approximate. Windows in cantilevers and size of cantilevers are subject to side yard restrictions. Garage dimensions are exterior. Illustrations are artist concepts and may vary. (05/2020 )



P 204-224-6155 E [broadviewhomesswpg@qualico.com](mailto:broadviewhomesswpg@qualico.com)

[BroadviewHomeswpg.com](http://BroadviewHomeswpg.com)



Elevation B: Concept Only

## HOME FEATURES

Bedroom: 3  
Bath: 2

Total: 1,200 Sq. Ft.

Elevation A B – Concept Only  
DG 23 – 2020



# THE GRAYSON

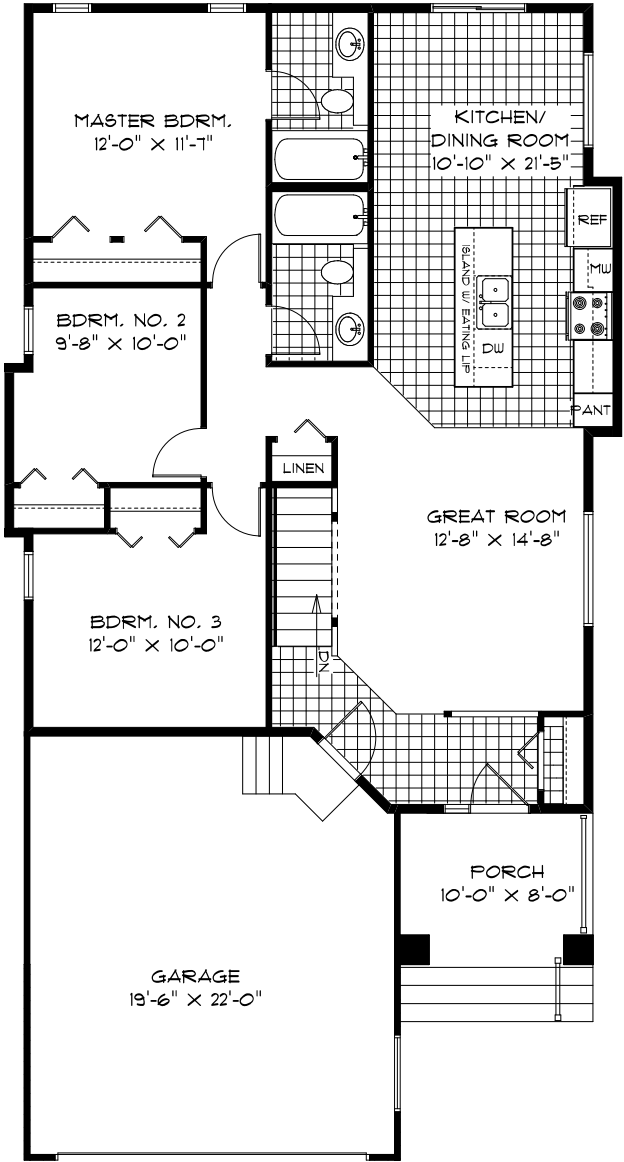
## HOME FEATURES

Bedroom: 3  
Bath: 2

Total: 1,200 Sq. Ft.

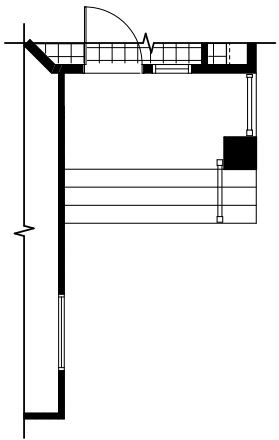
Elevation A B – Concept Only  
DG 23 - 20

- Large Front Attached Garage
- Covered Concrete Front Porch Entrance
- 9’ Main Floor Ceiling Height
- Galley Style Kitchen with Large Island with Eating Lip, Double Sinks and Pantry
- Dining Room Towards Rear with Patio Door
- Master Bedroom with Private Ensuite
- Open Concept Layout Great for Entertaining
- Lower Level Optional to Develop Adding an Additional Bedroom, 3rd Bath, and Rec. Room

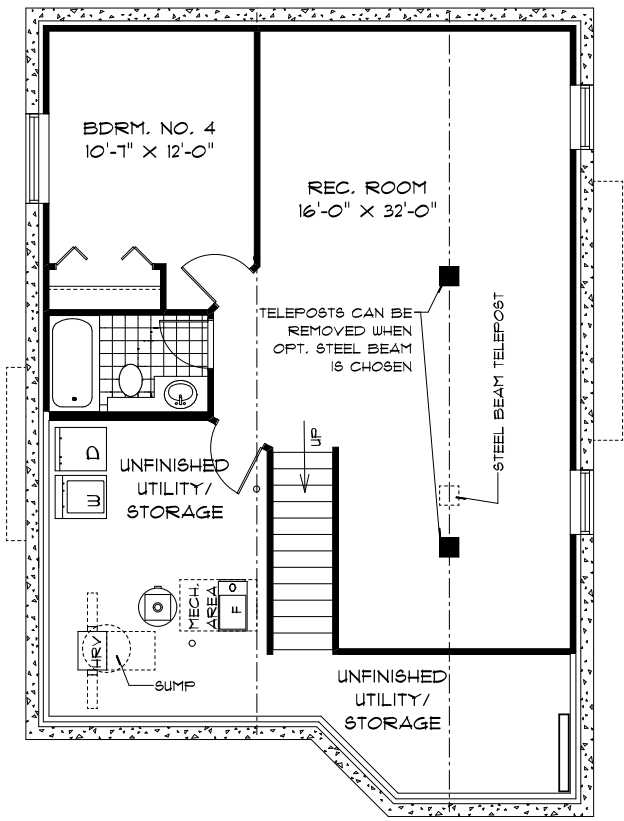


MAIN  
FLOOR PLAN

1,200 Sq. Ft.



ELEVATION B  
PARTIAL ENTRY



OPTIONAL LOWER  
LEVEL FLOOR PLAN

Finished Area: 682 Sq. Ft.

## ELEVATIONS

- Elevation A – Concept Only
  - Elevation B – Concept Only
- Shown with Opt. Exterior Lighting and Materials (See Reverse for Details)



PURCHASER INITIALS: \_\_\_\_\_