

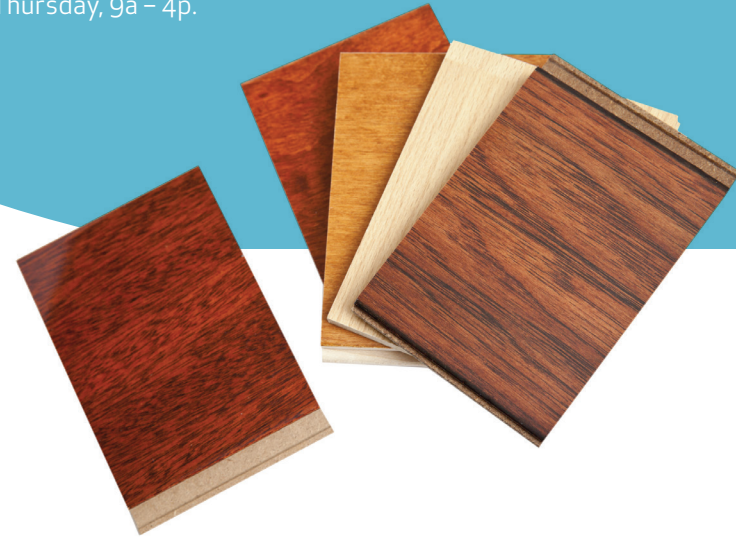


design Q

As part of the new home building process, Broadview Homes offers every home buyer a three-hour personal consultation with a Certified Interior Decorator in the 4,000 square foot design centre, **designQ**. Our Consultants assist purchasers in choosing interior and exterior selections for their new home.

designQ offers all popular upgrades on display, and Consultants are able to quote any upgrades of product selection after the consultation.

Located at the Qualico head office in Sage Creek, **designQ** holds an open house every Thursday, 9a – 4p.



A QUALICO Company

broadviewhomes.com/winnipeg
One Dr. David Friesen Drive
Winnipeg, MB R3X 0G8
204.233.2451

Plans and prices are subject to change without notice. The builder reserves the right to change material or specifications without notice, but guarantees that change will be of equal or greater value. Room dimensions are approximate. Windows in cantilevers and size of cantilevers are subject to side yard restrictions. Garage dimensions are exterior. Illustrations are artist concepts and may vary. (12/2015)



NOTES

THE SEQUOIA



Elevation A – concept only



Bedroom: 3 or 4
Bath: 2.5
Main Floor: 1,028 sqft
Second Floor: 981 sqft
Total: 2,009 sqft

DG 40 - 16
Elevations A, B, C

YOUR FAMILY IS IN GOOD HANDS.

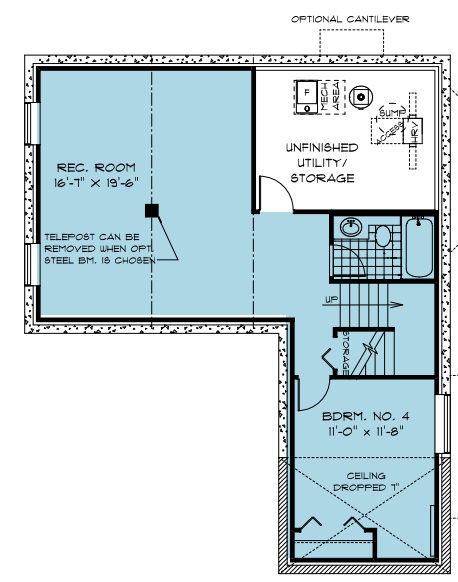
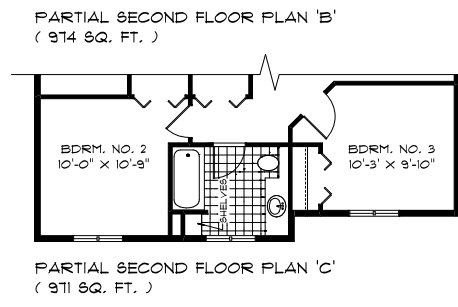
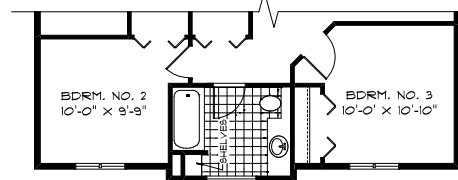
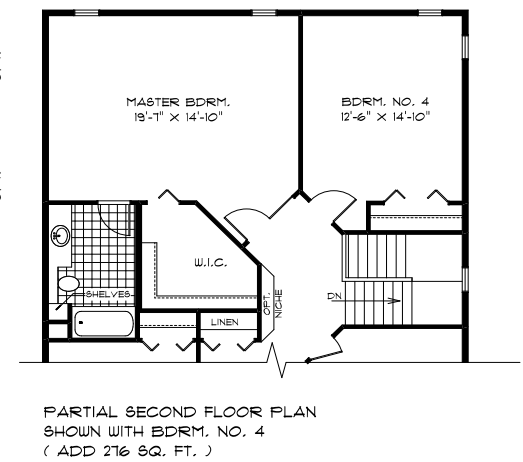
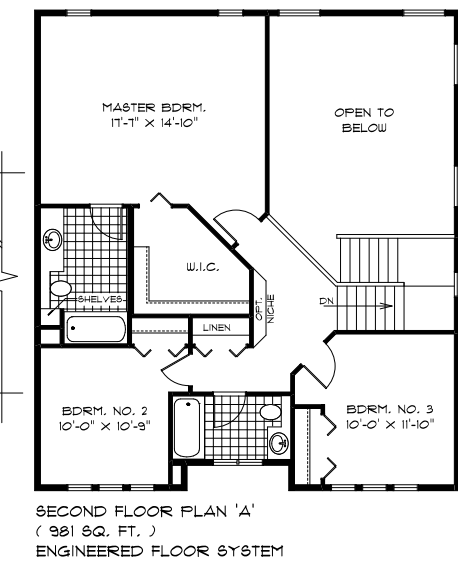
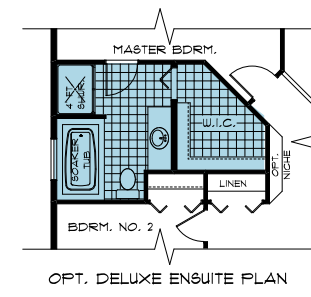
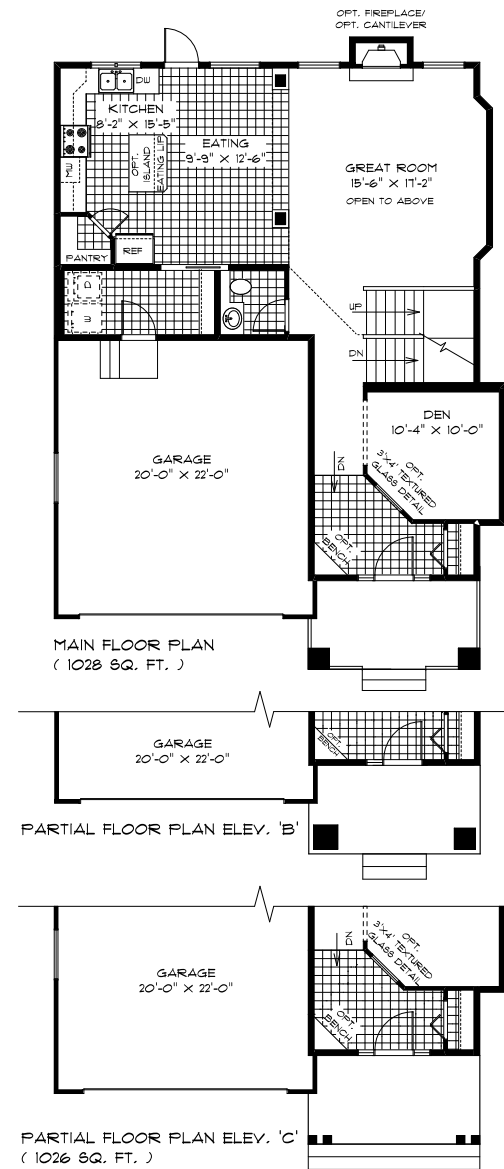
A QUALICO Company

THE SEQUOIA

HOME FEATURES

Bedroom: 3 or 4
 Bath: 2.5
 Main Floor: 1,028 SQFT
 Second Floor: 981 SQFT
Total: 2,009 SQ FT

- Double Attached Front Garage and Covered Front Entry
- Flexible Second Floor Layout Available as 3 or 4 Bedroom/Loft
- Large Great Room Adjacent to Eating Area with 18' Ceiling(3 Bedroom Version)
- Spacious Kitchen with Convenient Corner Pantry and Opt. Island
- Main Floor Laundry and Powder Room
- Master Bedroom Inc. Large WIC and Ensuite (Opt. Deluxe Ensuite Available)



ELEVATIONS



Elevation A 9' Main Floor Ceiling



Elevation B 9' Main Floor Ceiling
 Shown With Opt. Stone



Elevation C 9' Main Floor Ceiling

Purchaser Initials: _____