

As part of the new home building process, Broadview Homes offers every home buyer a three-hour personal consultation with a Certified Interior Decorator in the 4,000 square foot design centre, designQ.

Our Consultants assist purchasers in choosing interior and exterior selections for their new home.

designQ offers all popular upgrades on display, and Consultants are able to quote any upgrades of product selection after the consultation.

Located at the Qualico head office in Sage Creek, designQ holds an open house every Thursday, 9a-4p.



# THE HIGHVIEW



Elevation A: Concept Only

## BROADVIEW HOMES

Broadview Homes has been building new family homes in the Winnipeg market for over 30 years. We offer a wide variety of modern floor plans and design elements providing customers with many options to fit their needs and lifestyle. Choosing a Broadview Home is a great fit for homebuyers who are looking for affordability without any sacrifice to quality. Broadview Homes provides over 30 new home plans to select from ensuring we have many great options for every customer.

At Broadview Homes we are committed to providing a great experience for our customers throughout the selection and building process continuing after moving into the home. Our experts are here to answer your questions and make your new home process as quick and easy as possible at every stage. Our homes are available in many family friendly communities throughout Winnipeg for you to choose from. Start your next move now with Broadview Homes!



Plans and prices are subject to change without notice. Exterior renderings are for marketing purposes and may vary from actual standards included. The builder reserves the right to change material or specifications without notice, but guarantees that change will be of equal or greater value. Room dimensions are approximate. Windows in cantilevers and size of cantilevers are subject to side yard restrictions. Garage dimensions are exterior. Illustrations are artist concepts and may vary. (09/2019)



[BroadviewHomeswpg.com](http://BroadviewHomeswpg.com)

## HOME FEATURES

**Bedroom: 3**  
**Bath: 2**

Main Floor: 1,239 Sq. Ft.  
Second Floor: 359 Sq. Ft.  
**Total: 1,598 Sq. Ft.**

**Elevations A C – Concept Only**  
**DG 43 – 2020**

# THE HIGHVIEW

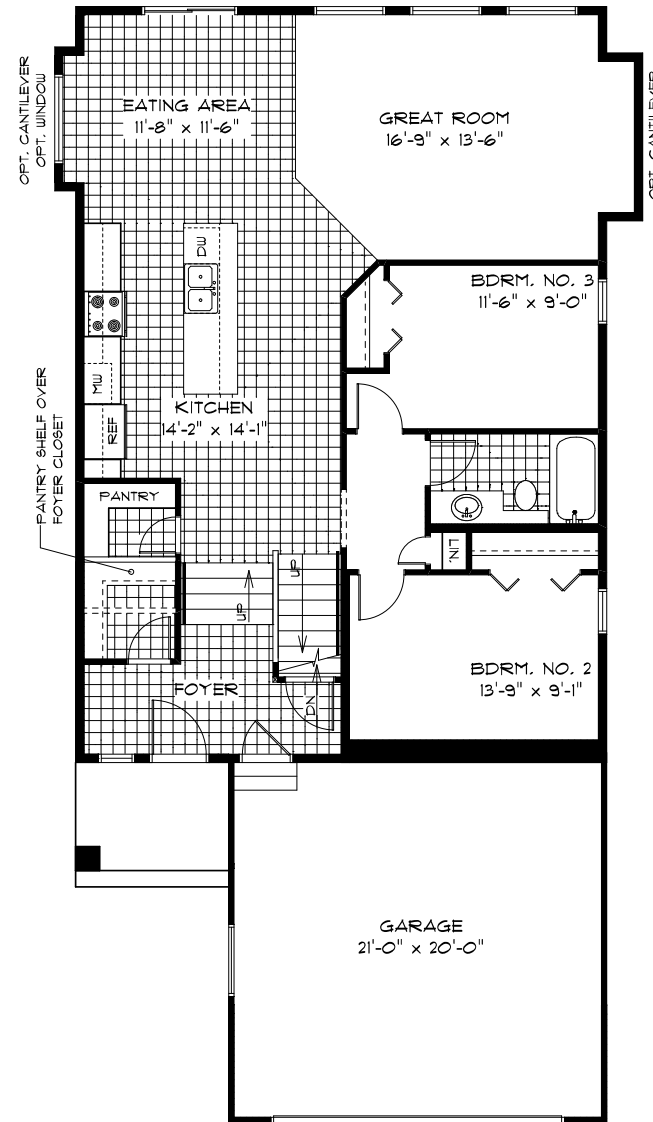
## HOME FEATURES

Bedroom: 3  
Bath: 2

Main Floor: 1,239 Sq. Ft.  
Second Floor: 359 Sq. Ft.  
**Total: 1,598 Sq. Ft.**

**Elevations A C- Concept Only**  
**DG 43 - 20**

- Cabover Layout with Split Level Design
- Vaulted Main Floor Ceiling
- Spacious Kitchen with Oversized Island with Double Sinks and a Walk-in Pantry
- Large Great Room with Optional Cantilever
- Master Bedroom Separate Above Garage with WIC and Private Ensuite
- Optional Ensuite Layout Available with Shower
- Lower Level of Home Optional to Develop, Adding an Additional Bedroom, 3rd Full Bath, and Rec. Room

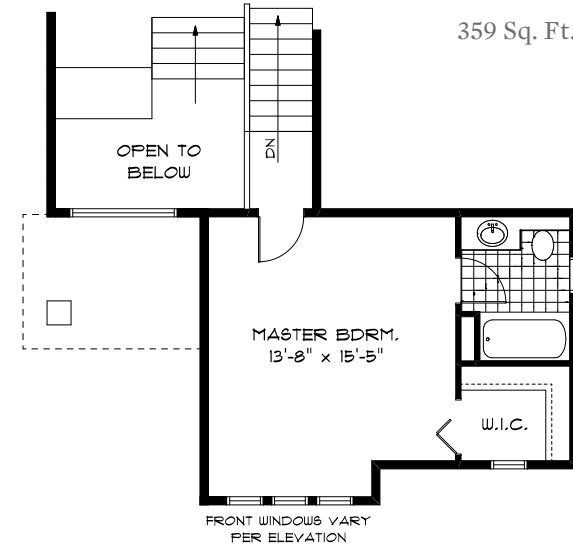


**MAIN FLOOR PLAN**

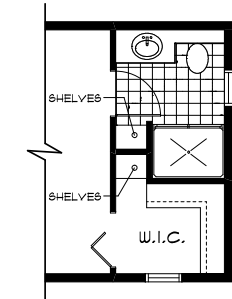
1,239 Sq. Ft.

**SECOND FLOOR PLAN**

359 Sq. Ft.

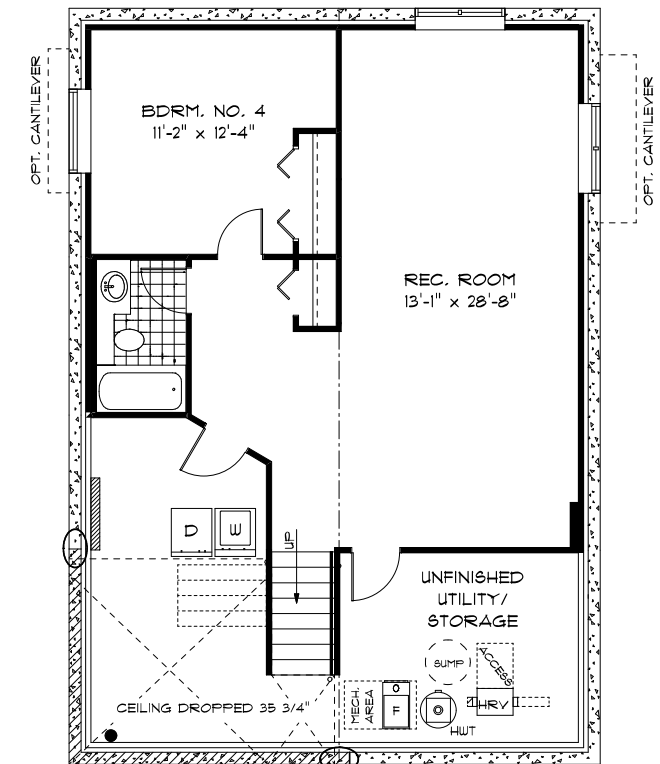


**OPTIONAL ENSUITE LAYOUT**



**OPTIONAL LOWER LEVEL FLOOR PLAN**

Finished Area: 713 Sq. Ft.



## ELEVATIONS

- Elevation A - Concept Only
  - Elevation C - Concept Only
- Shown with Opt. Exterior Lighting & Materials



PURCHASER INITIALS: \_\_\_\_\_