



# design Q



As part of the new home building process, Broadview Homes offers every home buyer a three-hour personal consultation with a Certified Interior Decorator in the 4,000 square foot design centre, **designQ**. Our Consultants assist purchasers in choosing interior and exterior selections for their new home.

**designQ** offers all popular upgrades on display, and Consultants are able to quote any upgrades of product selection after the consultation.

Located at the Qualico head office in Sage Creek, **designQ** holds an open house every Thursday, 9a – 4p.



**broadview**  
HOMES

Elevation B- Concept Only



BroadviewHomesWpg.com  
204 233 2451

Plans and prices are subject to change without notice. Exterior renderings are for marketing purposes and may vary from actual standards included. The builder reserves the right to change material or specifications without notice, but guarantees that change will be of equal or greater value. Room dimensions are approximate. Windows in cantilevers and size of cantilevers are subject to side yard restrictions. Garage dimensions are exterior. Illustrations are artist concepts and may vary. (12/2017)



## Broadview Homes

Broadview Homes has been building new family homes in the Winnipeg market for over 30 years. We offer a wide variety of modern floor plans and design elements providing customers with many options to fit their needs and lifestyle. Choosing a Broadview Home is a great fit for homebuyers who are looking for affordability without any sacrifice to quality. Broadview Homes provides over 30 new home plans to select from ensuring we have many great options for every customer.

At Broadview Homes we are committed to providing a great experience for our customers throughout the selection and building process continuing after moving into the home. Our experts are here to answer your questions and make your new home process as quick and easy as possible at every stage. Our homes are available in many family friendly communities throughout Winnipeg for you to choose from. Start your next move now with Broadview Homes!

# THE SEABRING

Bedroom: 3  
Bath: 2.5

Main Floor U1 & U2: 707 SQ FT  
Second Floor U1: 822 SQ FT  
Second Floor U2: 792 SQ FT

**Unit 1 Total: 1,529 SQ FT**  
**Unit 2 Total: 1,499 SQ FT**

SGA 10 - 17  
Elevations A, B, C

**YOUR FAMILY IS IN  
GOOD HANDS.**

A QUALICO Company



# The Seabring

Bedroom: 3

Bath: 2.5

Main Floor U1 & U2: 707 SQFT

Second Floor U1: 822 SQFT

Second Floor U2: 792 SQFT

**Unit 1 Total: 1,529 SQFT**

**Unit 2 Total: 1,499 SQFT**

## HOME FEATURES

- Front Attached Garage
- Rear Kitchen with Corner Pantry and Optional Island
- Main Floor Powder Room
- Patio Door Off of Dining Room at Rear of Home
- Master Bedroom Includes a WIC and Private Ensuite
- Convenient Second Floor Laundry
- Lower Level of Home Optional to Develop

## ELEVATIONS



Elevation A



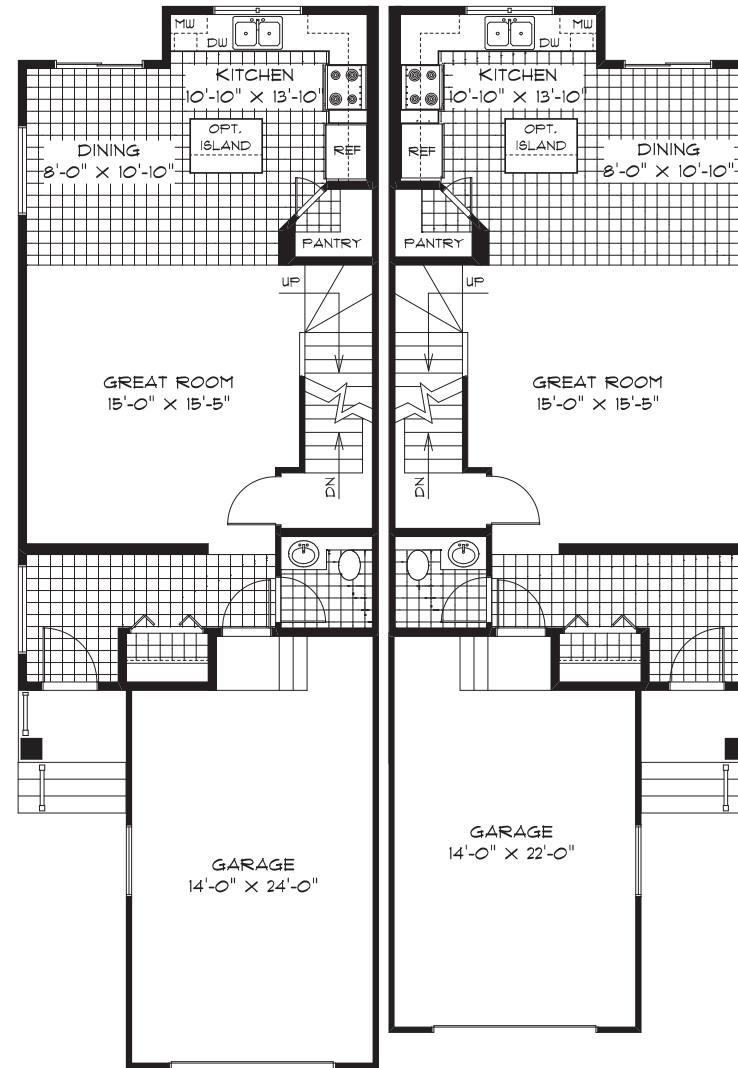
Elevation B

\*Renderings Shown with Optional Additional Exterior Lighting

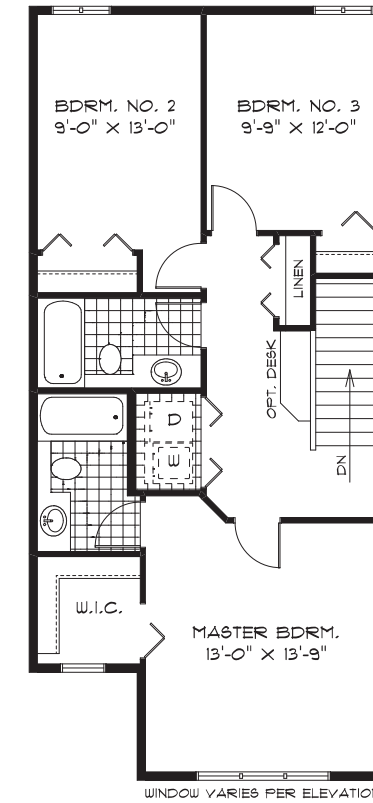


Elevation C

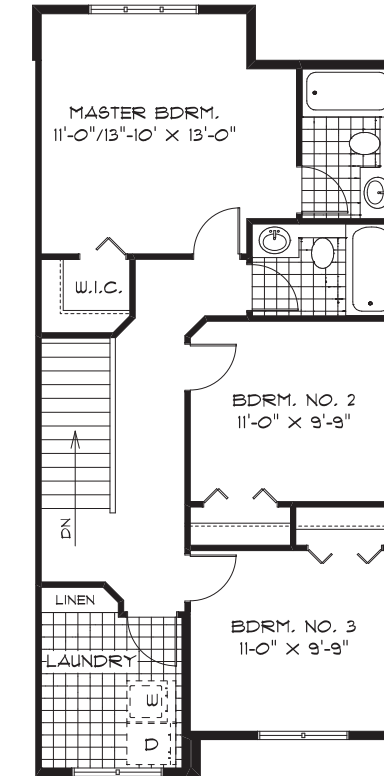
SG10 - UNIT 1  
MAIN FLOOR PLAN  
( 707 SQ. FT. )



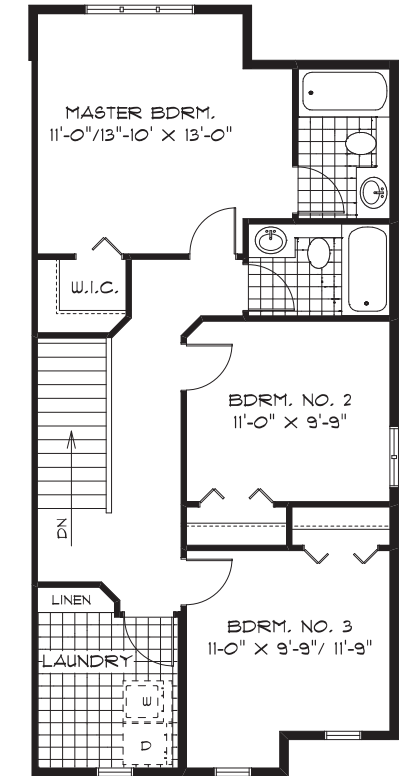
SG10 - UNIT 2  
MAIN FLOOR PLAN  
( 707 SQ. FT. )



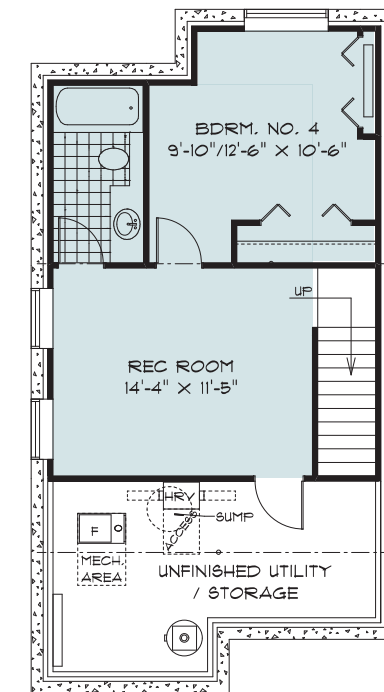
SG10 - UNIT 1  
SECOND FLOOR PLAN  
( 822 SQ. FT. )



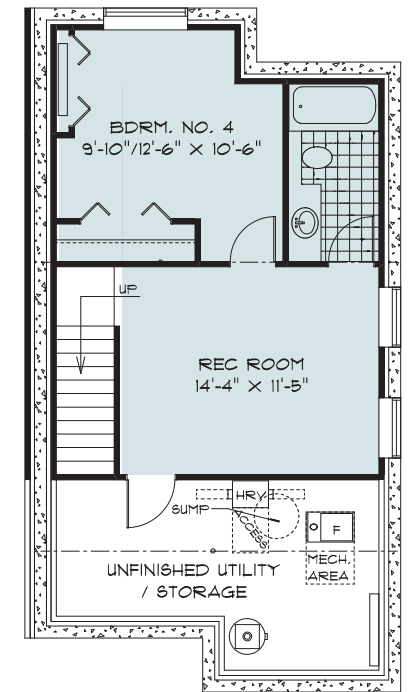
SG10 - UNIT 2, ELEV. 'A'  
SECOND FLOOR PLAN  
( 792 SQ. FT. )



SG10 - UNIT 2, ELEV. 'B' & 'C'  
SECOND FLOOR PLAN  
( 802 SQ. FT. )



OPTIONAL LOWER LEVEL FLOOR PLAN  
( FINISHED AREA 418 SQ. FT. )



OPTIONAL LOWER LEVEL FLOOR PLAN  
( FINISHED AREA 418 SQ. FT. )

Purchaser Initials: \_\_\_\_\_