



design Q

As part of the new home building process, Broadview Homes offers every home buyer a three-hour personal consultation with a Certified Interior Decorator in the 4,000 square foot design centre, **designQ**. Our Consultants assist purchasers in choosing interior and exterior selections for their new home.

designQ offers all popular upgrades on display, and Consultants are able to quote any upgrades of product selection after the consultation.

Located at the Qualico head office in Sage Creek, **designQ** holds an open house every Thursday, 9a – 4p.



Elevation C- Concept Only



BroadviewHomesWpg.com
204 233 2451

Plans and prices are subject to change without notice. Exterior renderings are for marketing purposes and may vary from actual standards included. The builder reserves the right to change material or specifications without notice, but guarantees that change will be of equal or greater value. Room dimensions are approximate. Windows in cantilevers and size of cantilevers are subject to side yard restrictions. Garage dimensions are exterior. Illustrations are artist concepts and may vary. (12/2017)



Broadview Homes

Broadview Homes has been building new family homes in the Winnipeg market for over 30 years. We offer a wide variety of modern floor plans and design elements providing customers with many options to fit their needs and lifestyle. Choosing a Broadview Home is a great fit for homebuyers who are looking for affordability without any sacrifice to quality. Broadview Homes provides over 30 new home plans to select from ensuring we have many great options for every customer.

At Broadview Homes we are committed to providing a great experience for our customers throughout the selection and building process continuing after moving into the home. Our experts are here to answer your questions and make your new home process as quick and easy as possible at every stage. Our homes are available in many family friendly communities throughout Winnipeg for you to choose from. Start your next move now with Broadview Homes!

THE SADDLEBROOK

Bedroom: 3
Bath: 2.5
Main Floor: 707SQFT
Second Floor: 860 SQFT
Total: 1,567 SQ FT

SGA 11-18
Elevations A, B, C

YOUR FAMILY IS IN GOOD HANDS.

A QUALICO® Company

The Saddlebrook

Bedroom: 3
 Bath: 2.5
 Main Floor: 707 SQFT
 Second Floor: 860 SQFT
Total: 1,567 SQFT

HOME FEATURES

- Front Attached Garage and Covered Entrance
- Kitchen Features a Corner Pantry and Optional Island with Eating Lip
- Main Floor Powder Room
- Master Bedroom Includes a WIC and Private Ensuite
- Convenient Second Floor Laundry Room
- Lower Level of Home Optional to Develop

ELEVATIONS



Elevation A

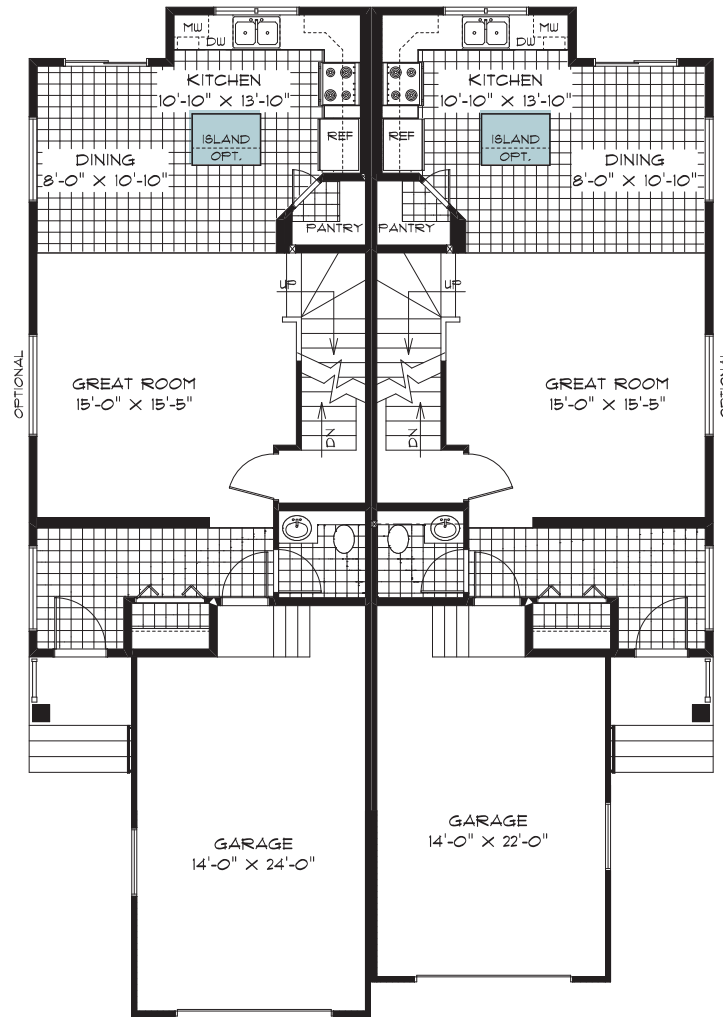


Elevation B

Renderings shown with Optional Additional Exterior Lighting - Concept Only

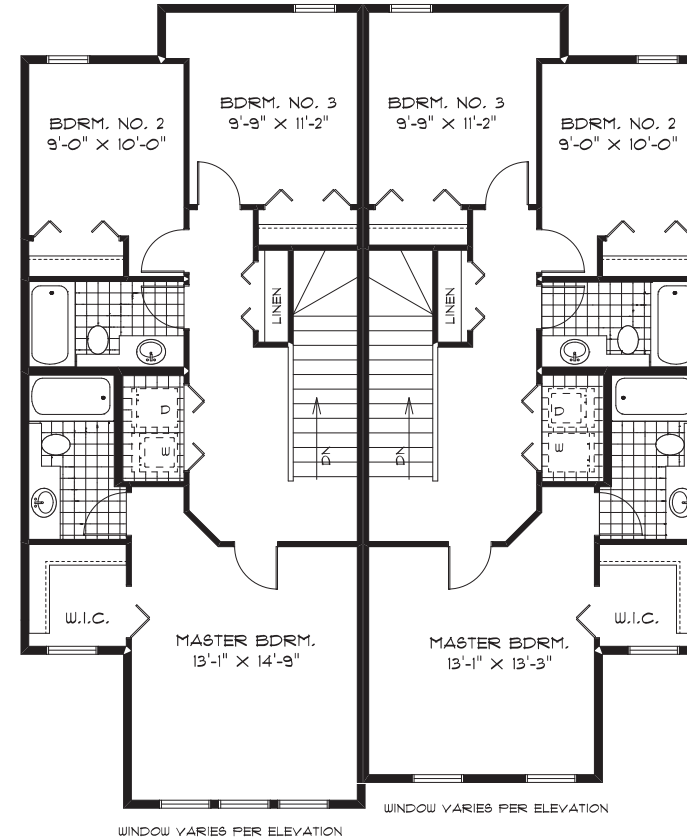


Elevation C



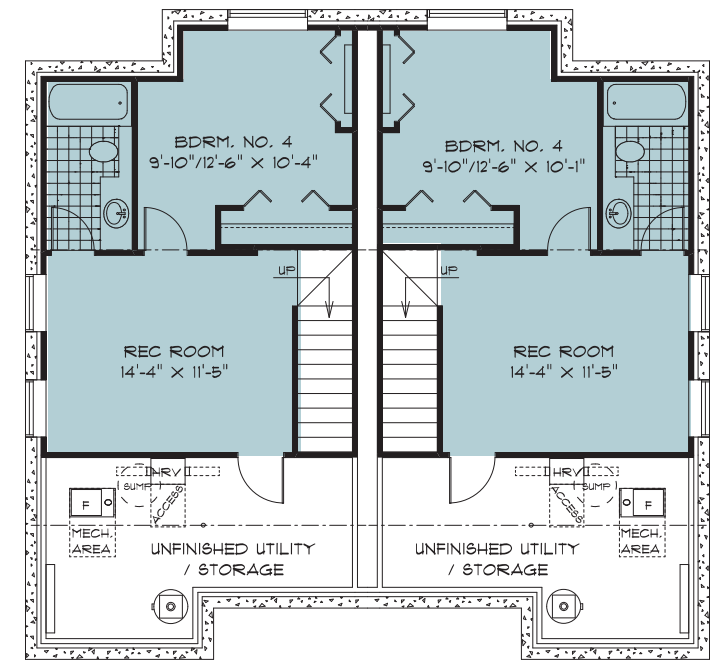
SG11- UNIT 1
 MAIN FLOOR PLAN
 (707 SQ. FT.)

SG11- UNIT 2
 MAIN FLOOR PLAN
 (707 SQ. FT.)



SG11- UNIT 1
 SECOND FLOOR PLAN
 (860 SQ. FT.)

SG11- UNIT 2
 SECOND FLOOR PLAN
 (839 SQ. FT.)



SG11- UNIT 1
 OPTIONAL LOWER LEVEL
 FLOOR PLAN
 (FINISHED AREA=
 418 SQ. FT.)

SG11- UNIT 2
 OPTIONAL LOWER LEVEL
 FLOOR PLAN
 (FINISHED AREA=
 418 SQ. FT.)

Purchaser Initials: _____