



As part of the new home building process, Broadview Homes offers every home buyer a three-hour personal consultation with a Certified Interior Decorator in the 4,000 square foot design centre, designQ.

Our Consultants assist purchasers in choosing interior and exterior selections for their new home.

designQ offers all popular upgrades on display, and Consultants are able to quote any upgrades of product selection after the consultation.

Located at the Qualico head office in Sage Creek, designQ holds an open house every Thursday, 9a-4p.



BROADVIEW HOMES

Broadview Homes has been building new family homes in the Winnipeg market for over 30 years. We offer a wide variety of modern floor plans and design elements providing customers with many options to fit their needs and lifestyle. Choosing a Broadview Home is a great fit for homebuyers who are looking for affordability without any sacrifice to quality. Broadview Homes provides over 30 new home plans to select from ensuring we have many great options for every customer.

At Broadview Homes we are committed to providing a great experience for our customers throughout the selection and building process continuing after moving into the home. Our experts are here to answer your questions and make your new home process as quick and easy as possible at every stage. Our homes are available in many family friendly communities throughout Winnipeg for you to choose from. Start your next move now with Broadview Homes!



Plans and prices are subject to change without notice. Exterior renderings are for marketing purposes and may vary from actual standards included. The builder reserves the right to change material or specifications without notice, but guarantees that change will be of equal or greater value. Room dimensions are approximate. Windows in cantilevers and size of cantilevers are subject to side yard restrictions. Garage dimensions are exterior. Illustrations are artist concepts and may vary. (01/2020)



BroadviewHomeswpg.com

P 204-224-6155 E broadviewhomeswpg@qualico.com

HOME FEATURES

Bedroom: 3
Bath: 2.5

Main Floor Unit 1 & 5: 664 Sq. Ft.
Second Floor Unit 1 & 5: 664 Sq. Ft.

Main Floor Unit 2 & 4: 663 Sq. Ft.
Second Floor Unit 2 & 4: 689 Sq. Ft.

Main Floor Unit 3: 663 Sq. Ft.
Second Floor Unit 3: 663 Sq. Ft.

Elevation A – Concept Only
TH 5 – 2020

Unit 1 & 5 Total: 1,328 Sq. Ft.
Unit 2 & 4 Total: 1,352 Sq. Ft.
Unit 3 Total: 1,326 Sq. Ft.

Elevation A: Concept Only

THE NEWPORT

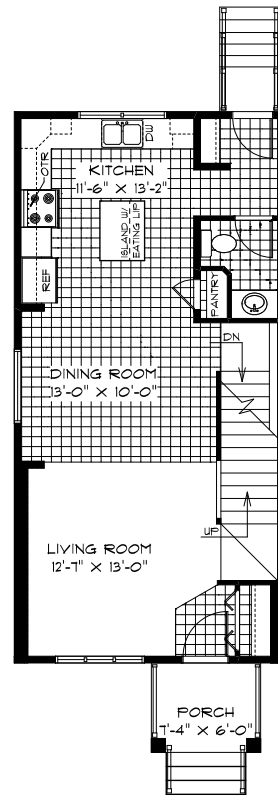
HOME FEATURES

Bedroom: 3
Bath: 2.5

Unit 1 & 5 Total: 1,328 Sq. Ft.
Unit 2 & 4 Total: 1,352 Sq. Ft.
Unit 3 Total: 1,326 Sq. Ft.

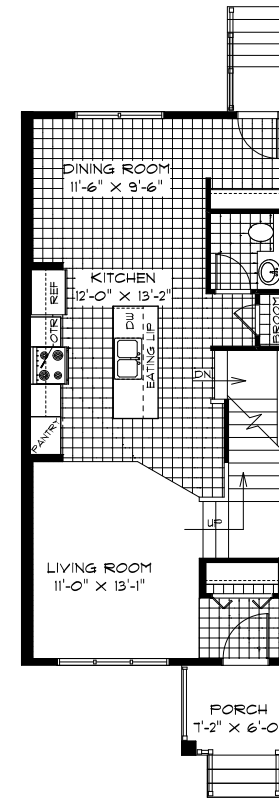
Elevation A- Concept Only
TH 5 - 20

- Front Porch Entrance with Coat Closet in Foyer - Porch Varies per Unit
- Spacious Living Room Towards Front of Home
- Vinyl Plank Flooring Throughout Main Floor
- Galley Style or Corner Kitchen with Island Complete with Eating Lip - Varies per Unit
- Stainless Steel Over-the-Range Microwave
- 6" Potlights in Kitchen and Living Room
- Hanging Pendant Lights above Kitchen Island
- Convenient Main Floor Powder Room
- Private Ensuite and WIC in Master Bedroom
- Second Floor Laundry Room with Linen Shelves
- Rear Entrance to Home with Coat Closet



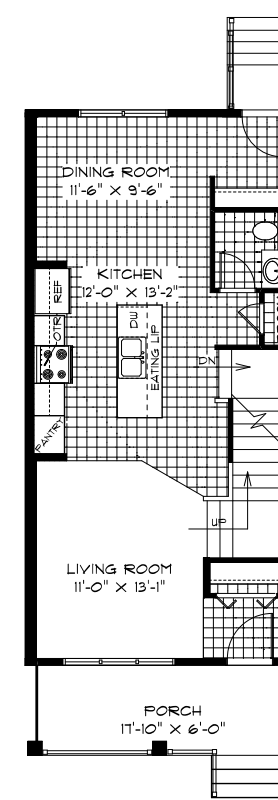
**MAIN FLOOR
UNIT 1 & 5 PLAN**

664 Sq. Ft.



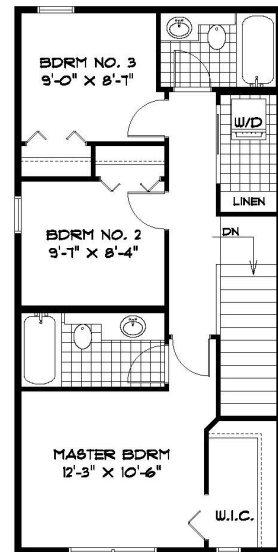
**MAIN FLOOR
UNIT 2 & 4 PLAN**

663 Sq. Ft.



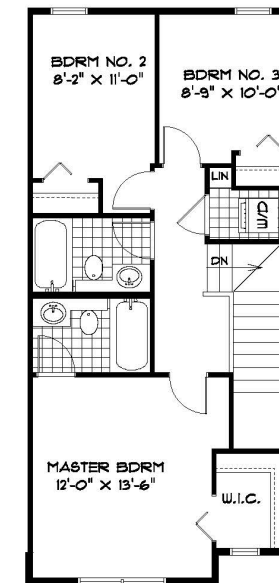
**MAIN FLOOR
UNIT 3 PLAN**

663 Sq. Ft.



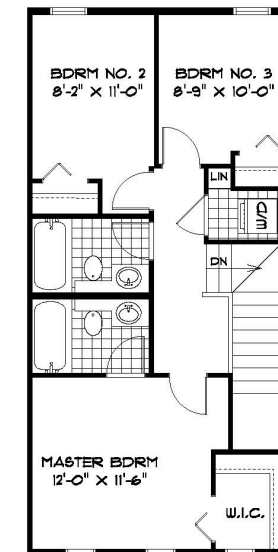
**SECOND FLOOR
UNIT 1 & 5 PLAN**

664 Sq. Ft.



**SECOND FLOOR
UNIT 2 & 4 PLAN**

689 Sq. Ft.



**SECOND FLOOR
UNIT 3 PLAN**

663 Sq. Ft.

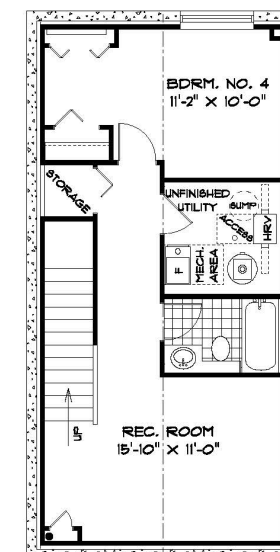
ELEVATIONS

- Elevation A- Concept Only



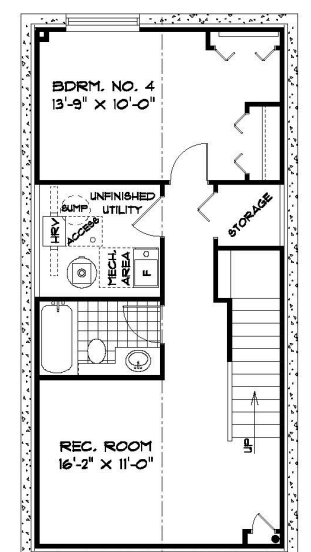
**OPTIONAL
LOWER LEVEL
UNIT 1 & 5 PLAN**

Finished Area: 421 Sq. Ft.



**OPTIONAL
LOWER LEVEL
UNIT 2, 3 & 4 PLAN**

Finished Area: 424 Sq. Ft.



PURCHASER INITIALS: _____