



# THE PRESTON

## BROADVIEW HOMES

Broadview Homes has been building new family homes in the Winnipeg market for over 30 years. Choosing a Broadview Home is a great fit for homebuyers who are looking for affordability without any sacrifice of quality. We are committed to providing a great experience for our customers throughout the selection and building process continuing

after moving into the home. Our experts are here to answer your questions and make your new home process as quick and easy as possible at every stage. Our homes are available in many family friendly communities throughout Winnipeg for you to choose from. Start your next move now with Broadview Homes!



Elevation C – Concept Only

Photos shown are of the Preston model with upgraded features.

As part of the new home building process, Broadview Homes offers every home buyer a three-hour personal consultation with a Certified Interior Decorator in the 4,000 square foot design centre, designQ.



Plans and prices are subject to change without notice. Exterior renderings are for marketing purposes and may vary from actual standards included. The builder reserves the right to change material or specifications without notice, but guarantees that change will be of equal or greater value. Room dimensions are approximate. Windows in cantilevers and size of cantilevers are subject to side yard restrictions. Garage dimensions are exterior. Illustrations are artist concepts and may vary. (06/2023 )

P 204-254-9265 F 204-233-2518 E [broadviewhomeswpg@qualico.com](mailto:broadviewhomeswpg@qualico.com)

[BroadviewHomesWPG.com](http://BroadviewHomesWPG.com)

## HOME FEATURES

Bedroom: 3  
Bath: 2.5

Main Floor: 762 Sq. Ft.  
Second Floor: 856 Sq. Ft.  
Total: 1,618 Sq. Ft.

Elevation A B C D – Concept Only  
DG 10 - 2023

# THE PRESTON

## HOME FEATURES

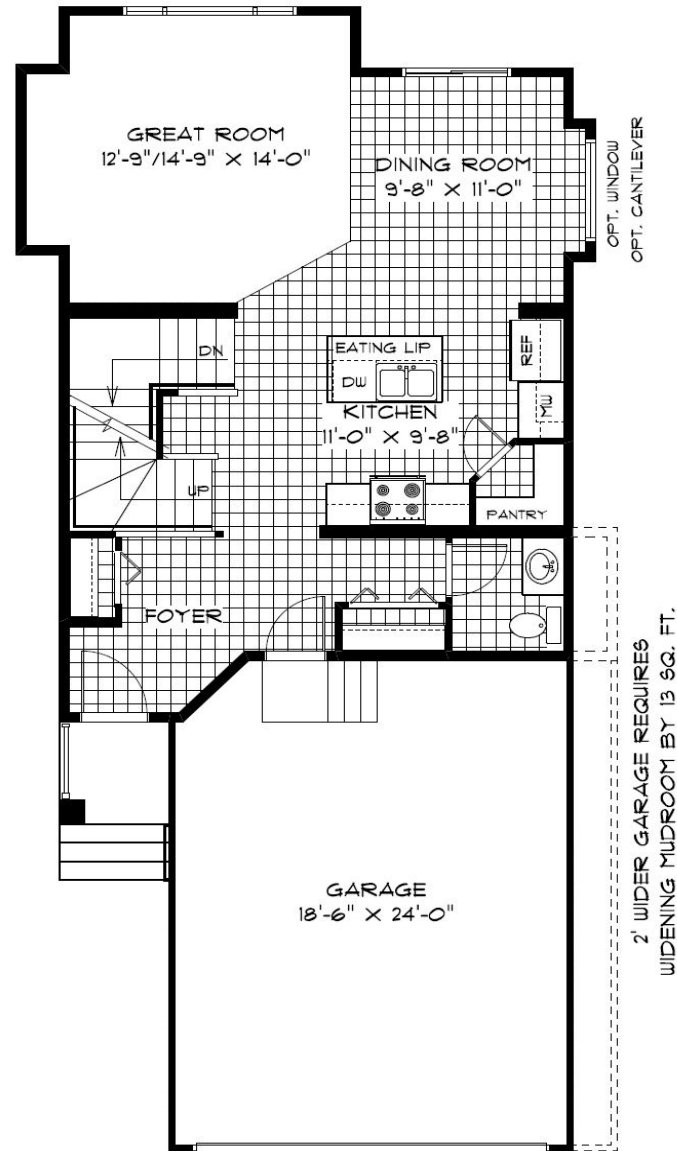
Bedroom: 3  
Bath: 2.5

Main Floor: 762 Sq. Ft.  
Second Floor: 856 Sq. Ft.  
Total: 1,618 Sq. Ft.

Elevations A B C D – Concept Only  
DG 10 - 23

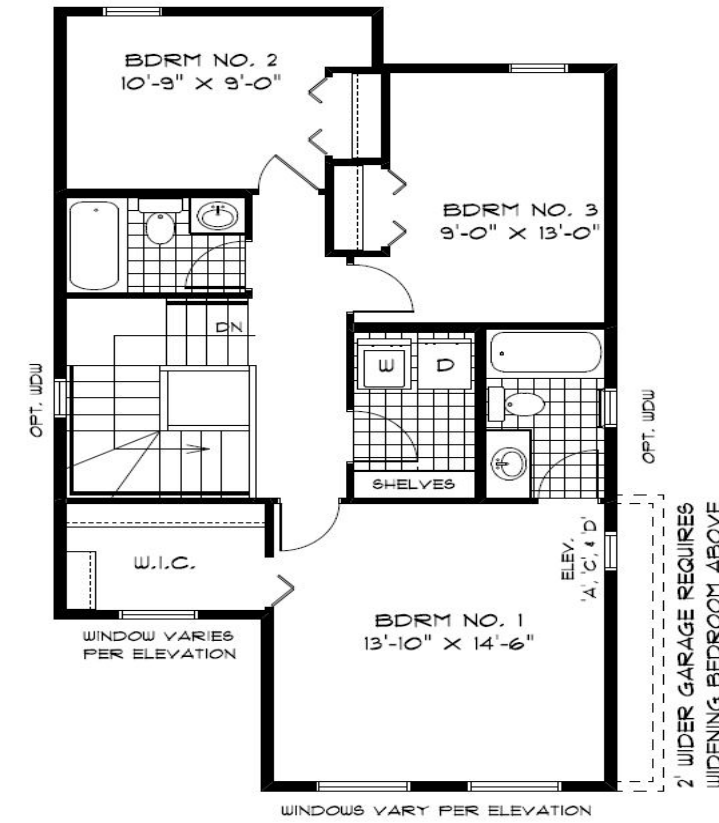
- Front Attached Garage
- Powder Room on Main Floor
- Kitchen Includes Island with Eating Lip & Convenient Corner Pantry
- Patio Door at Rear off of Dining Room
- Large Great Room at Rear of Home
- Convenient Second Floor Laundry & Linen Area
- WIC and Private Ensuite in Primary Bedroom
- Lower Level of Home Optional to Develop
- 1-2-5-10 Year New Home Warranty Program

PURCHASER INITIALS: \_\_\_\_\_

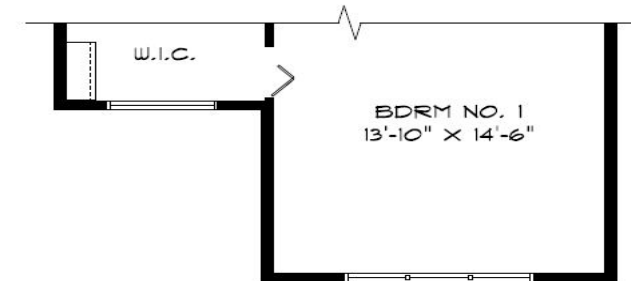


**MAIN FLOOR PLAN**

762 Sq. Ft.



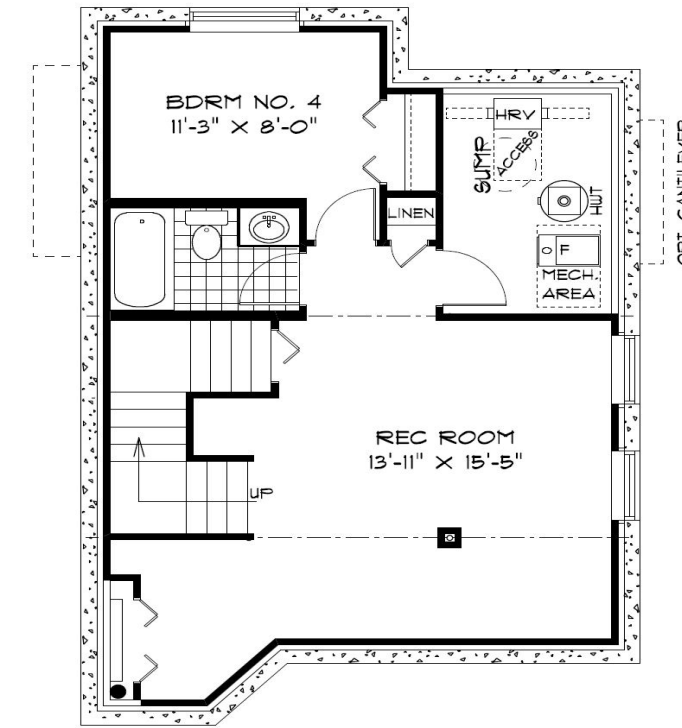
**BROADVIEW - DG 10 SECOND FLOOR PLAN ( 856 SQ. FT. )**



**PARTIAL SECOND FLOOR PLAN 'B' ( 856 SQ. FT. )**

**SECOND FLOOR PLAN**

856 Sq. Ft.



**OPTIONAL LOWER LEVEL FLOOR PLAN**

Finished Area: 489 Sq. Ft.



## ELEVATIONS:

Elevations Shown are Concept Only and May Vary from Standard.

Shown with Optional Exterior Lighting & Features