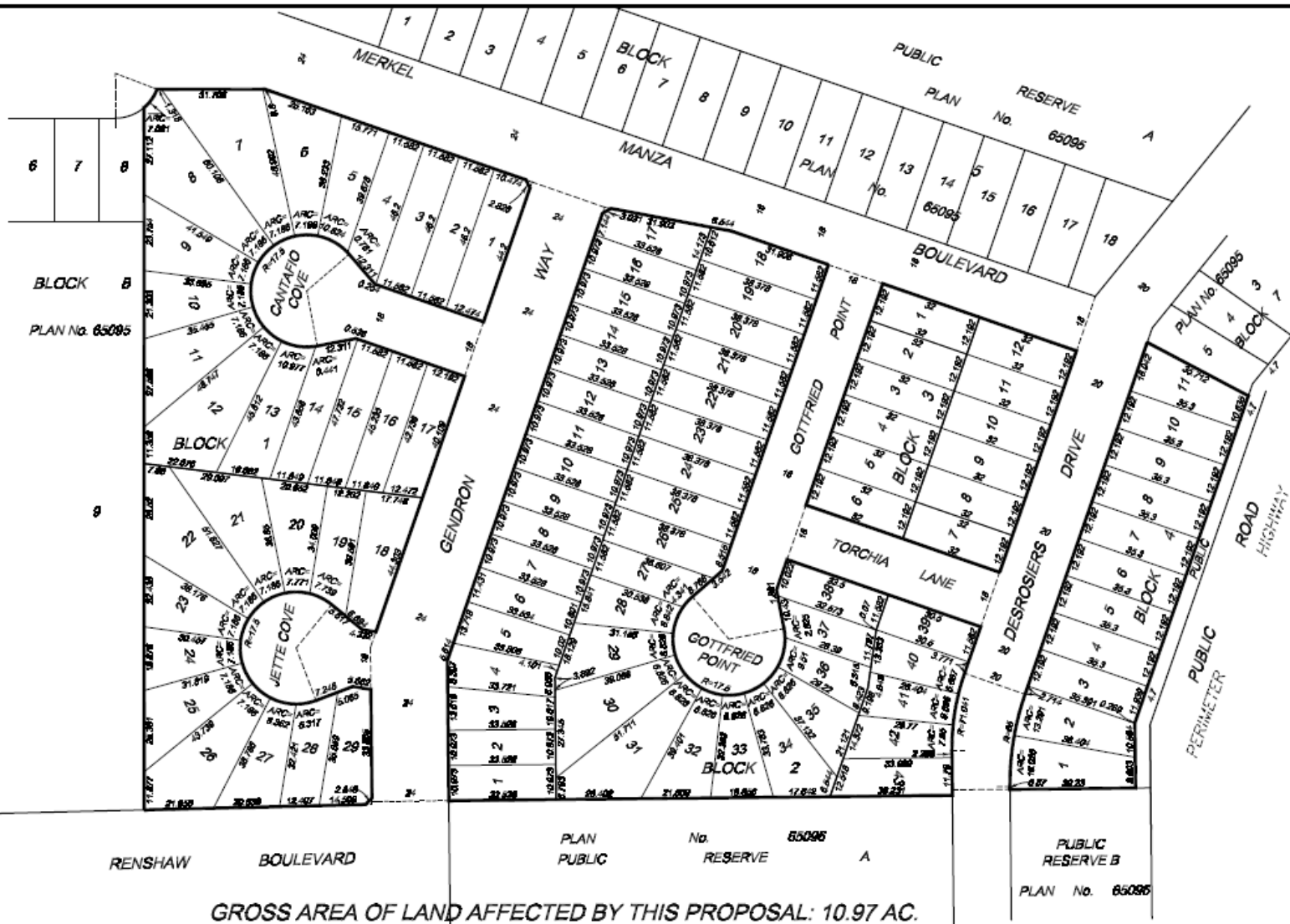






METRIC



GROSS AREA OF LAND AFFECTED BY THIS PROPOSAL: 10.97 AC.

- Albert C. Degnar  
M.L.S., C.L.S.
- Leslie McLaughlin  
M.L.S., C.L.S.
- Jim G. Warding  
P.Eng., B.Sc., B.E., M.L.S., C.L.S.
- James E. Baillie  
M.L.S.
- Vincent B.D. Sward  
M.L.S.
- Jason A. Crossley  
M.L.S.
- Daniel G. Degnar  
M.L.S.
- Ian W. Baldwin  
M.L.S.

  
**ASSOCIATION OF MANITOBA LAND SURVEYORS**  
 PERMIT  
 POLLOCK & WRIGHT  
 MANITOBA LAND SURVEYORS LTD.  
 No. 2016-4

© Pollock & Wright  
 Manitoba Land Surveyors  
 Ltd., 2008.  
 All rights reserved.  
 No person may copy,  
 reproduce, transmit or  
 alter this document and  
 no person may distribute  
 or store copies of this  
 document, in whole or in  
 part.

OUR FILE NO.: EDGECORP  
 DATE: FEBRUARY 18, 2020  
 PREPARED FOR:  
 EDGECORP  
 F.R. 16 - N/A

**NOTES:**  
 DIMENSIONS ARE SHOWN IN METRES AND DECIMALS THEREOF.  
 PROPOSED SUBDIVISION SHOWN BORDERED THUS.....

**PROPOSED SUBDIVISION**  
 OF  
 LOT 6 BLOCK 7, LOTS 10 AND 11, BLOCK 8,  
 LOTS 1 AND 2, BLOCK 9 AND  
 LOTS 1 AND 2 BLOCK 10 PLAN No. 65095 WLTO  
 IN THE 8E1/4 SEC. 3-11-4 EPM  
 WINNIPEG, MANITOBA

**ORIGINAL SIGNED BY:**  
 Leslie Neil McLaughlin, M.L.S., C.L.S.

Leslie Neil McLaughlin, M.L.S., C.L.S.



**LAND SURVEYING • GEOMATICS**  
 2076 Notre Dame Avenue  
 Winnipeg, MB R3H 0B8  
 T: (204) 917-1557 F: (204) 913-0021  
 Toll Free: 1-800-563-8656  
 Wednesday: 9 am - 5 pm  
 2-500 Main Street, Winkler, MB R0W 1J3  
 T: (204) 325-1515

SCALE: Not to Scale

DRAWING NAME: PLAN 65095

