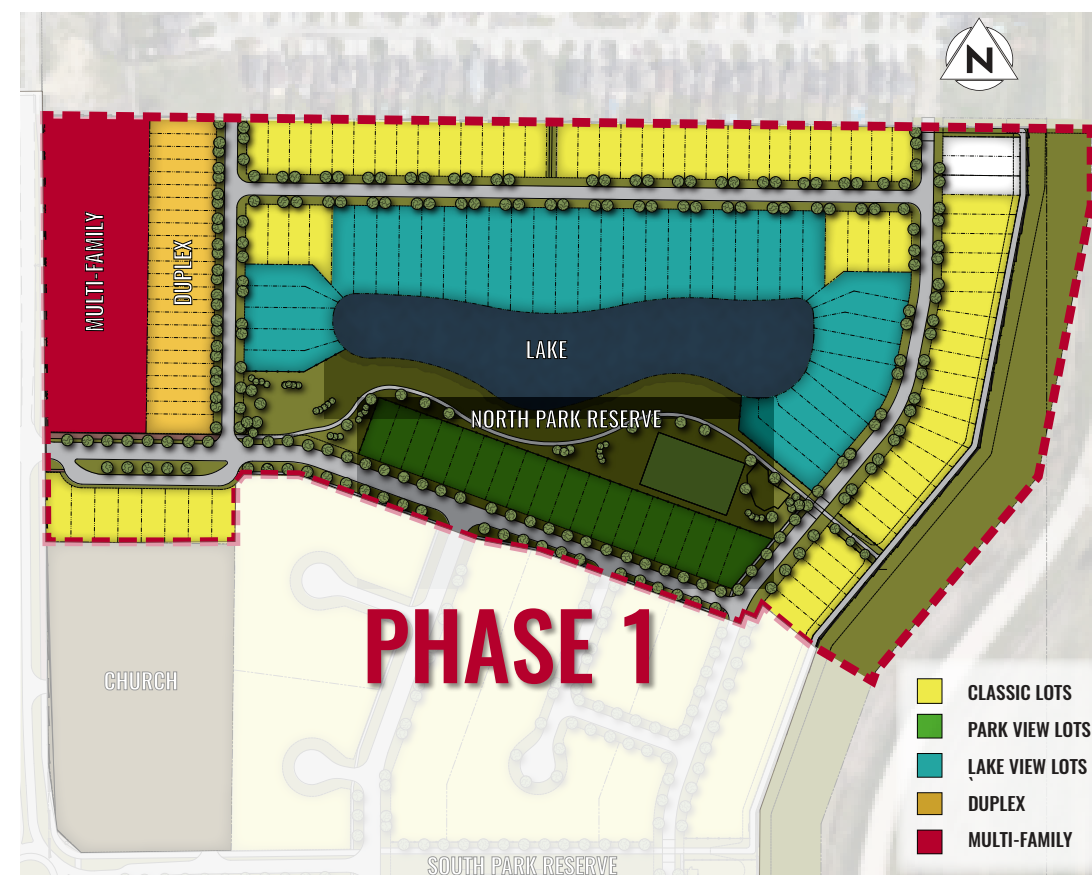




# CANTERBURY CROSSING

Canterbury Crossing is Transcona's newest residential community. The development's design emphasizes quality living and community aesthetics. Moreover, the development will include a wide variety of housing types that will be seamlessly connected to parks and green spaces, shopping, public transit, and neighbourhoods.







PANDORA AVE EAST

MULTI-FAMILY

DUPLEX

LAKE

NORTH PARK RESERVE

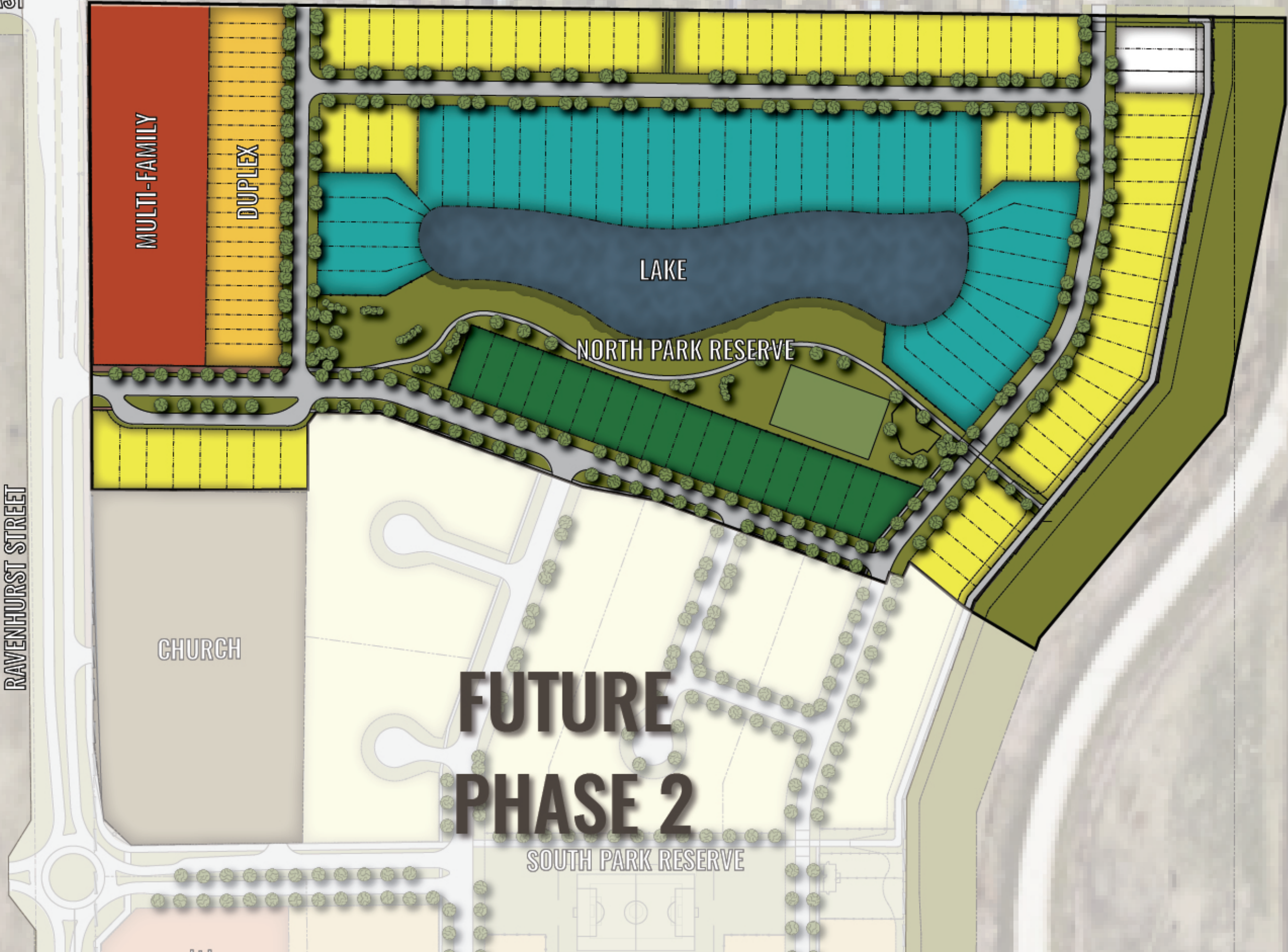
CHURCH

**FUTURE  
PHASE 2**

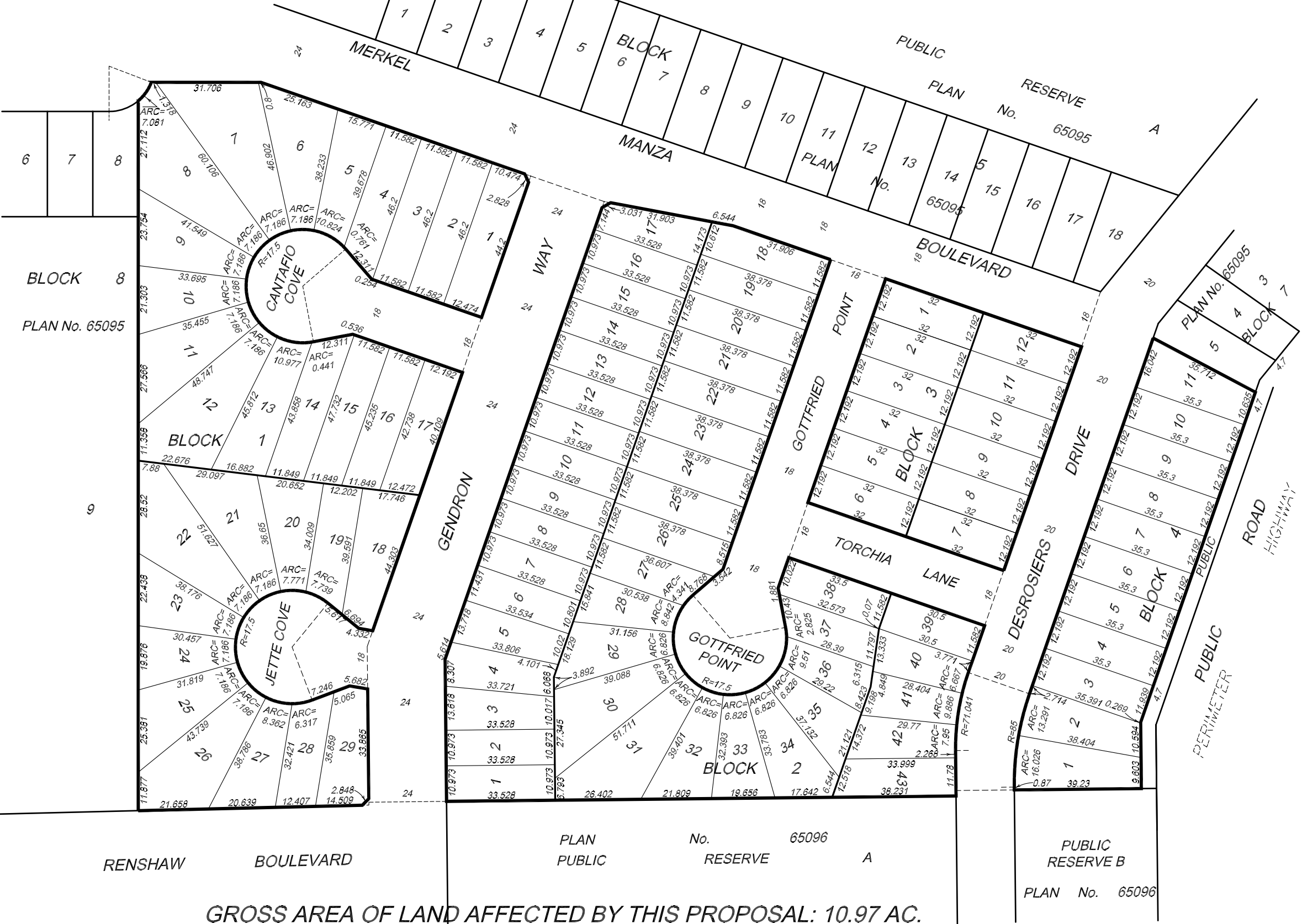
SOUTH PARK RESERVE

RAVENHURST STREET

PERIMETER HWY







GROSS AREA OF LAND AFFECTED BY THIS PROPOSAL: 10.97 AC.

© Pollock & Wright  
Manitoba Land Surveyors  
Ltd., 2020.  
All rights reserved.  
No person may copy,  
reproduce, transmit, or  
after this document and  
no person may distribute  
or store copies of this  
document, in whole or in  
part.

NOTES:  
DIMENSIONS ARE SHOWN IN METRES AND DECIMALS THEREOF.  
PROPOSED SUBDIVISION SHOWN BORDERED THUS.....

PROPOSED SUBDIVISION  
OF  
LOT 6 BLOCK 7, LOTS 10 AND 11, BLOCK 8,  
LOTS 1 AND 2, BLOCK 9 AND  
LOTS 1 AND 2 BLOCK 10 PLAN No. 65095 WLTO  
IN THE SE 1/4 SEC. 3-11-4 EPM  
WINNIPEG, MANITOBA

ORIGINAL SIGNED BY:  
Leslie Neil McLaughlin, M.L.S., C.L.S.

Leslie Neil McLaughlin, M.L.S., C.L.S.



LAND SURVEYING • GEOMATICS  
2070 Notre Dame Avenue  
Winnipeg, MB R3H 0J8  
T: (204) 947-1557 F: (204) 943-8024  
Toll Free: 1-800-563-8656  
Wednesday: 9 am - 5 pm  
2-500 Main Street, Winkler, MB R6W 1J3  
T: (204) 325-4615

- Albert G. Degner  
M.L.S., C.L.S.
- Leslie McLaughlin  
M.L.S., C.L.S.
- Jim G. Watling  
P.Eng., BSc., S.E., M.L.S., C.L.S.
- James E. Bailie  
M.L.S.
- Vincent B.D. Sward  
M.L.S.
- Jason A. Crossley  
M.L.S.
- Daniel G. Degner  
M.L.S.
- Ian W. Baldwin  
M.L.S.

ASSOCIATION  
OF MANITOBA  
LAND SURVEYORS  
PERMIT  
POLLOCK & WRIGHT  
MANITOBA LAND  
SURVEYORS LTD.  
No. 2016-4