



design Q



As part of the new home building process, Broadview Homes offers every home buyer a three-hour personal consultation with a Certified Interior Decorator in the 4,000 square foot design centre, **designQ**. Our Consultants assist purchasers in choosing interior and exterior selections for their new home.

designQ offers all popular upgrades on display, and Consultants are able to quote any upgrades of product selection after the consultation.

Located at the Qualico head office in Sage Creek, **designQ** holds an open house every Thursday, 9a – 4p.



broadview
HOMES

Elevation A shown with optional porch – concept only



BroadviewHomesWpg.com
204 233 2451

Plans and prices are subject to change without notice. Exterior renderings are for marketing purposes and may vary from actual standards included. The builder reserves the right to change material or specifications without notice, but guarantees that change will be of equal or greater value. Room dimensions are approximate. Windows in cantilevers and size of cantilevers are subject to side yard restrictions. Garage dimensions are exterior. Illustrations are artist concepts and may vary. (12/2017)



National Home Warranty
BUILT ON INTEGRITY

Broadview Homes

Broadview Homes has been building new family homes in the Winnipeg market for over 30 years. We offer a wide variety of modern floor plans and design elements providing customers with many options to fit their needs and lifestyle. Choosing a Broadview Home is a great fit for homebuyers who are looking for affordability without any sacrifice to quality. Broadview Homes provides over 30 new home plans to select from ensuring we have many great options for every customer.

At Broadview Homes we are committed to providing a great experience for our customers throughout the selection and building process continuing after moving into the home. Our experts are here to answer your questions and make your new home process as quick and easy as possible at every stage. Our homes are available in many family friendly communities throughout Winnipeg for you to choose from. Start your next move now with Broadview Homes!

THE MONTICELLO

Bedroom: 3
Bath: 2.5
Main Floor: 1,151 SQFT
Second Floor: 887 SQFT
Total: 2,038 SQFT

DG 16 - 18
Elevations A, C, F

**YOUR FAMILY IS IN
GOOD HANDS.**

The Monticello

Bedroom: 3
 Bath: 2.5
 Main Floor: 1151 SQFT
 Second Floor: 887 SQFT
Total: 2,038 SQFT

HOME FEATURES

- Front Attached Garage and Covered Front Entrance with Optional Porch
- Large Kitchen with Island with Eating Lip and Walk-thru Pantry
- Spacious Great Room with Alcove and Optional Fireplace/Ent. Unit and 18' Ceiling
- Three 2nd Floor Bedrooms with an Optional 4th Bedroom with Homework Nook
- Master Bedroom with WIC and Full Ensuite
- Optional Deluxe Ensuite and Optional Shower Ensuite Layouts Available
- Main Floor Powder Room
- Formal Dining Room/Den Space
- Convenient Main Floor Laundry
- Lower Level of Home Optional to Develop

ELEVATIONS



Elevation A



Elevation A - Shown with Optional Porch



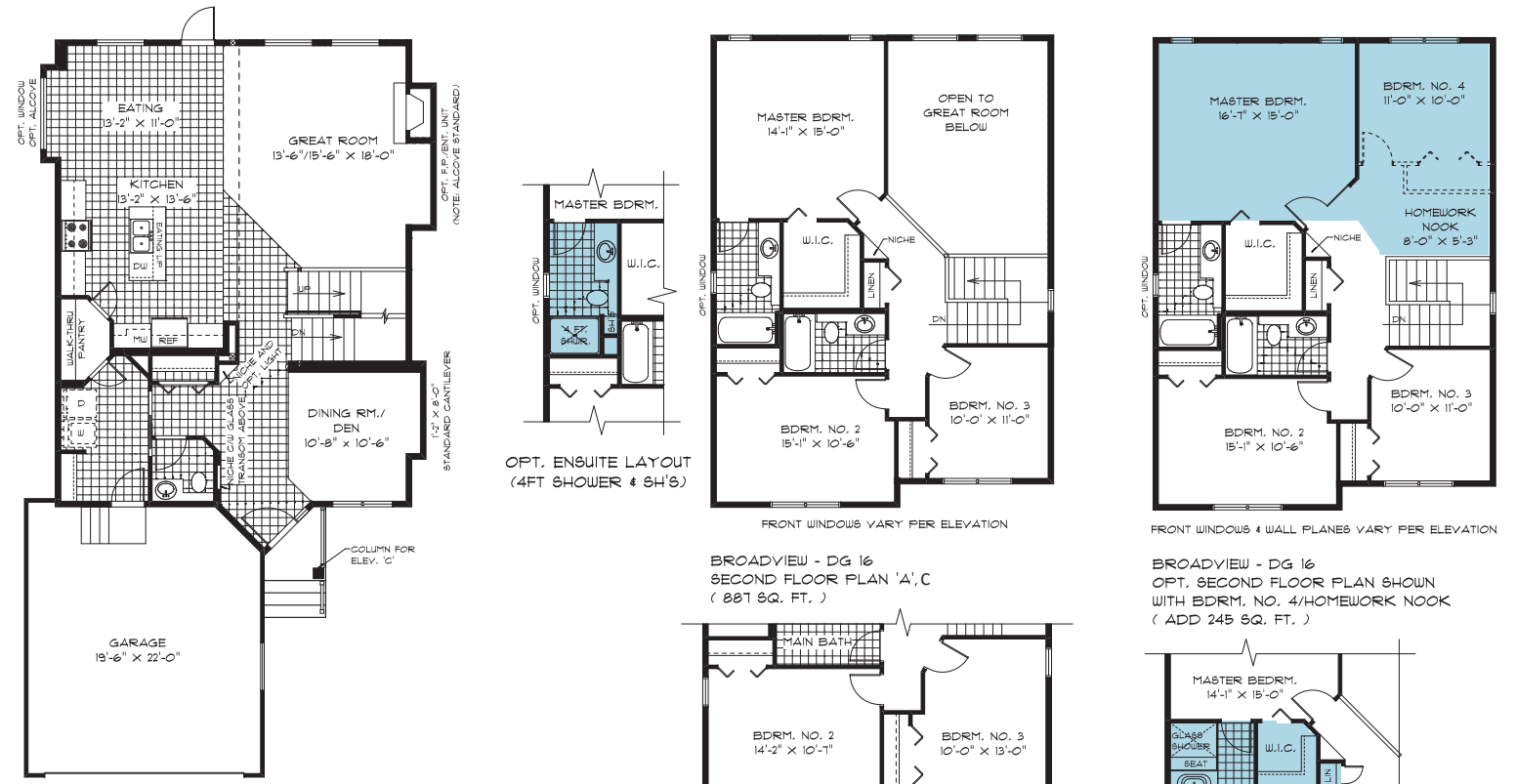
Elevation C



Elevation C shown with optional porch



Elevation F



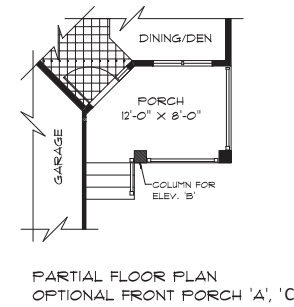
BROADVIEW - DG 16
 MAIN FLOOR PLAN
 (1151 SQ. FT.)
 ADD 9 SQ. FT. FOR OPT. EATING ALCOVE

OPT. ENSUITE LAYOUT
 (4FT SHOWER & 6H'S)

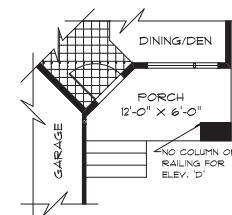
BROADVIEW - DG 16
 SECOND FLOOR PLAN 'A, C'
 (887 SQ. FT.)

PARTIAL SECOND FLOOR PLAN 'F'
 (913 SQ. FT.)

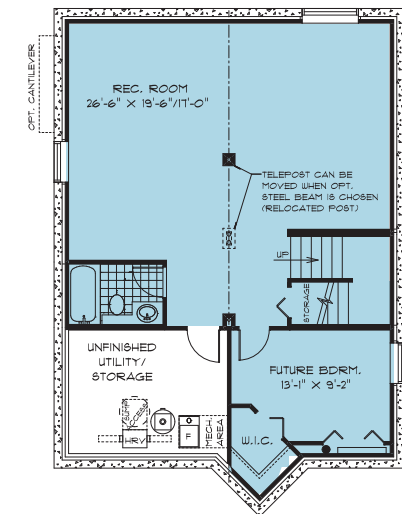
BROADVIEW - DG 16
 OPT. SECOND FLOOR PLAN SHOWN
 WITH BDRM. NO. 4/HOMEWORK NOOK
 (ADD 245 SQ. FT.)



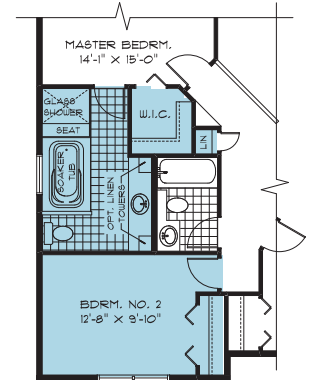
PARTIAL FLOOR PLAN
 OPTIONAL FRONT PORCH 'A, C'



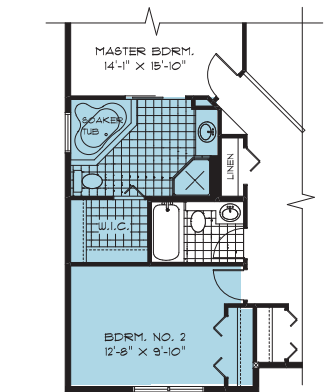
PARTIAL FLOOR PLAN
 FRONT PORCH 'F'
 (FRONT WINDOW VARIES
 BETWEEN ELEVATIONS)



BROADVIEW - DG 16
 OPTIONAL LOWER LEVEL FLOOR PLAN
 (FINISHED AREA 1671 SQ. FT.)



BROADVIEW - DG 16
 OPT. DELUXE ENSUITE W/ GLASS SHOWER



BROADVIEW - DG 16
 OPT. DELUXE ENSUITE PLAN
 WITH CORNER TUB

Purchaser Initials: _____