



# THE THORNCLIFF



As part of the new home building process, Broadview Homes offers every home buyer a three-hour personal consultation with a Certified Interior Decorator in the 4,000 square foot design centre, designQ.

Our Consultants assist purchasers in choosing interior and exterior selections for their new home.

designQ offers all popular upgrades on display, and Consultants are able to quote any upgrades of product selection after the consultation.

Located at the Qualico head office in Sage Creek, designQ holds an open house every Thursday, 9a-4p.



## BROADVIEW HOMES

Broadview Homes has been building new family homes in the Winnipeg market for over 30 years. We offer a wide variety of modern floor plans and design elements providing customers with many options to fit their needs and lifestyle. Choosing a Broadview Home is a great fit for homebuyers who are looking for affordability without any sacrifice to quality. Broadview Homes provides over 30 new home plans to select from ensuring we have many great options for every customer.

At Broadview Homes we are committed to providing a great experience for our customers throughout the selection and building process continuing after moving into the home. Our experts are here to answer your questions and make your new home process as quick and easy as possible at every stage. Our homes are available in many family friendly communities throughout Winnipeg for you to choose from. Start your next move now with Broadview Homes!



Elevation B: Concept Only

Plans and prices are subject to change without notice. Exterior renderings are for marketing purposes and may vary from actual standards included. The builder reserves the right to change material or specifications without notice, but guarantees that change will be of equal or greater value. Room dimensions are approximate. Windows in cantilevers and size of cantilevers are subject to side yard restrictions. Garage dimensions are exterior. Illustrations are artist concepts and may vary. (05/2020 )

P 204-224-6155 E [broadviewhomesswpg@qualico.com](mailto:broadviewhomesswpg@qualico.com)



[BroadviewHomeswpg.com](http://BroadviewHomeswpg.com)

## HOME FEATURES

Bedroom: 3  
Bath: 2.5

Main Floor: 778 Sq. Ft.  
Second Floor: 723 Sq. Ft.  
Total: 1,501 Sq. Ft.

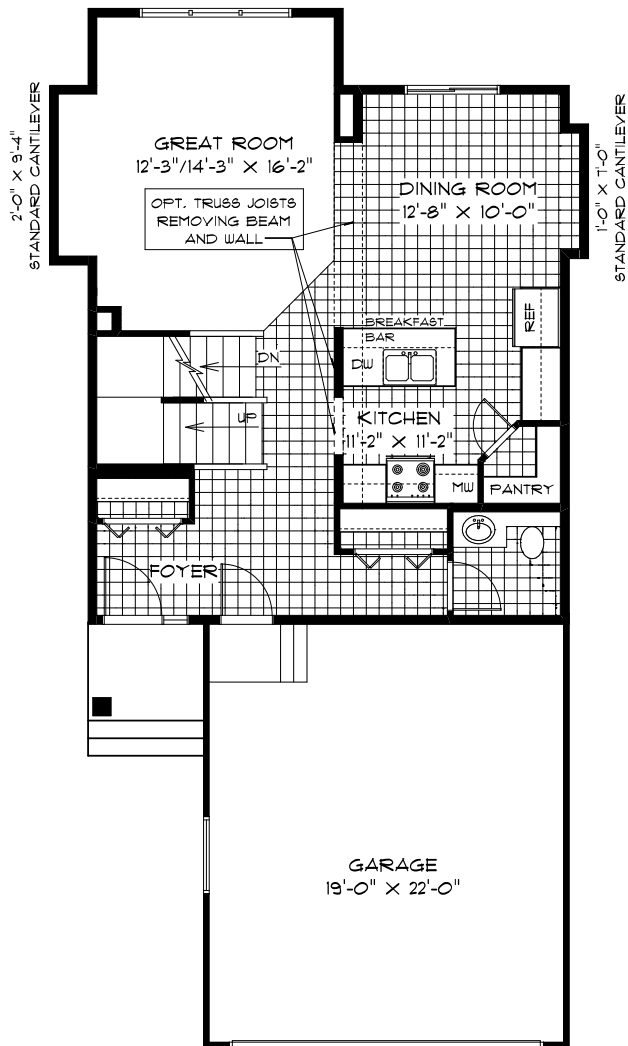
Elevation A B – Concept Only  
DG 8 – 2020



# THE THORNCLIFF

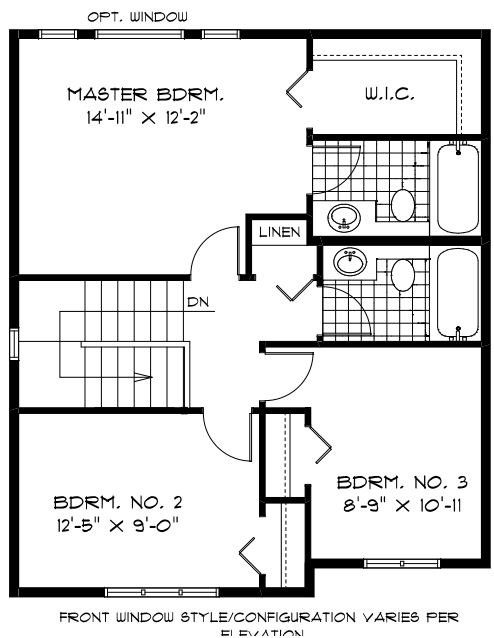
## HOME FEATURES

- Bedroom: 3  
Bath: 2.5
- Main Floor: 778 Sq. Ft.  
Second Floor: 723 Sq. Ft.
- Total: 1,501 Sq. Ft.
- Elevation A B – Concept Only  
DG 8 - 20
- Large Front Attached Garage
  - 9’ Main Floor Ceiling Height
  - Optional Main Floor Laundry
  - Corner Pantry and Island with Breakfast Bar
  - Large Great Room with Standard 2’ Deep Cantilever
  - Dining Room with Sliding Patio Doors
  - Convenient Main Floor Powder Room
  - Master Bedroom with Private Ensuite and WIC
  - Lower Level Optional to Develop Adding an Additional Bedroom, 3rd Bath, and Rec. Room



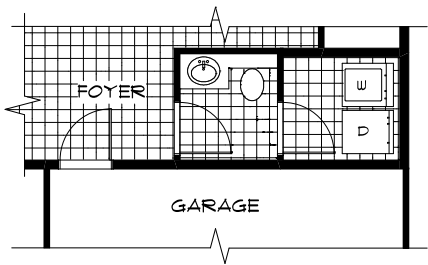
MAIN FLOOR PLAN

778 Sq. Ft.

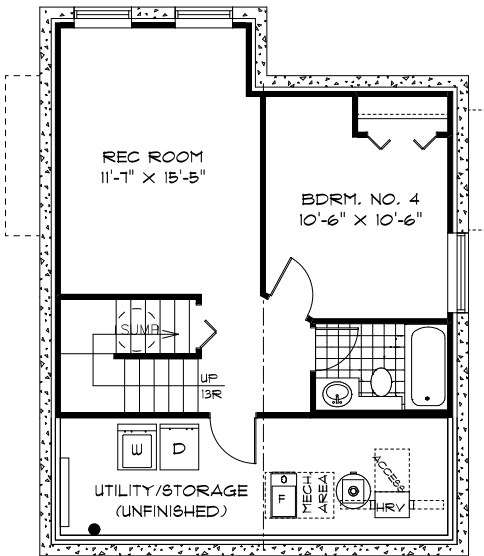


SECOND FLOOR PLAN

723 Sq. Ft.



OPTIONAL MAIN FLOOR LAUNDRY



OPTIONAL LOWER LEVEL FLOOR PLAN

Finished Area: 417 Sq. Ft.

## ELEVATIONS

- Elevation A – Concept Only
  - Elevation B - Concept Only
- Shown with Opt. Exterior Lighting and Materials (See Reverse for Details)

