



design Q

As part of the new home building process, Broadview Homes offers every home buyer a three-hour personal consultation with a Certified Interior Decorator in the 4,000 square foot design centre, **designQ**. Our Consultants assist purchasers in choosing interior and exterior selections for their new home.

designQ offers all popular upgrades on display, and Consultants are able to quote any upgrades of product selection after the consultation.

Located at the Qualico head office in Sage Creek, **designQ** holds an open house every Thursday, 9a – 4p.



Elevation C- Concept Only



BroadviewHomesWpg.com
204 233 2451

Plans and prices are subject to change without notice. Exterior renderings are for marketing purposes and may vary from actual standards included. The builder reserves the right to change material or specifications without notice, but guarantees that change will be of equal or greater value. Room dimensions are approximate. Windows in cantilevers and size of cantilevers are subject to side yard restrictions. Garage dimensions are exterior. Illustrations are artist concepts and may vary. (12/2017)



Broadview Homes

Broadview Homes has been building new family homes in the Winnipeg market for over 30 years. We offer a wide variety of modern floor plans and design elements providing customers with many options to fit their needs and lifestyle. Choosing a Broadview Home is a great fit for homebuyers who are looking for affordability without any sacrifice to quality. Broadview Homes provides over 30 new home plans to select from ensuring we have many great options for every customer.

At Broadview Homes we are committed to providing a great experience for our customers throughout the selection and building process continuing after moving into the home. Our experts are here to answer your questions and make your new home process as quick and easy as possible at every stage. Our homes are available in many family friendly communities throughout Winnipeg for you to choose from. Start your next move now with Broadview Homes!

THE SHERWOOD

Bedroom: 3
Bath: 2.5
Main Floor: 660 SQFT
Second Floor: 858 SQFT
Total: 1,518 SQ FT

SGA12-18
Elevations A, B, C

YOUR FAMILY IS IN GOOD HANDS.

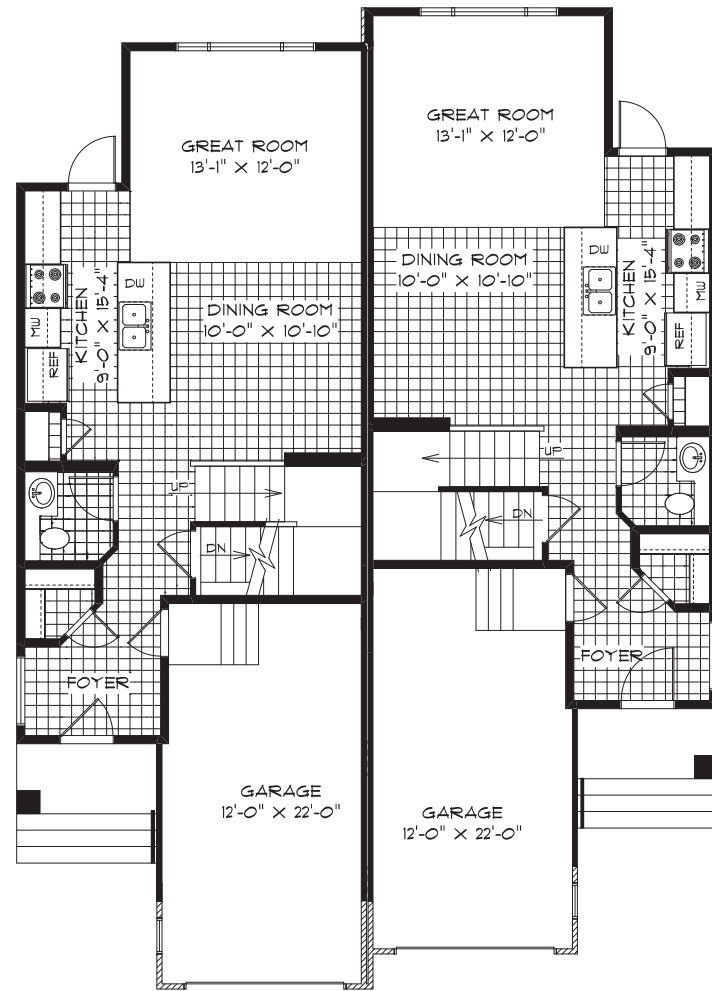
A QUALICO Company

The Sherwood

Bedroom: 3
 Bath: 2.5
 Main Floor: 660 SQFT
 Second Floor: 858 SQFT
Total: 1,518 SQFT

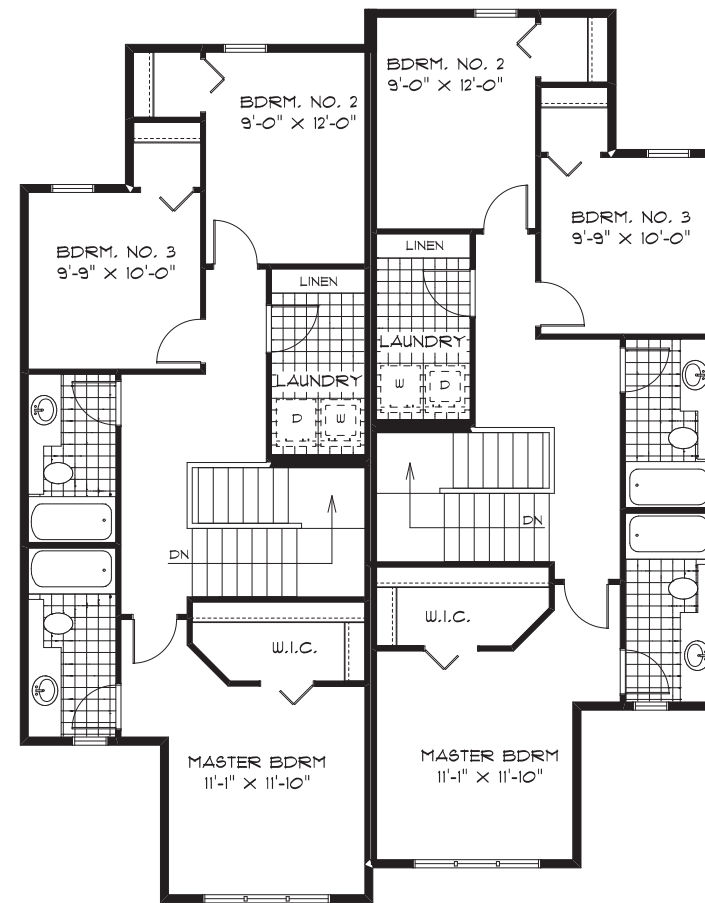
HOME FEATURES

- Front Attached Garage and Covered Entrance
- Galley Style Kitchen Features a Pantry and Large Island with Eating Lip
- Main Floor Powder Room
- Master Bedroom Includes a WIC and Private Ensuite
- Convenient Second Floor Laundry Room
- Lower Level of Home Optional to Develop



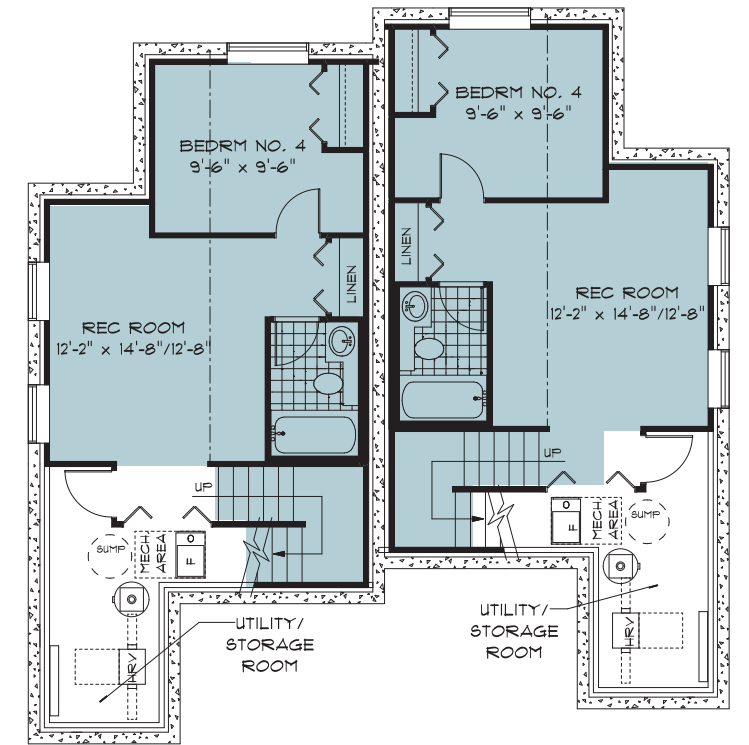
SGA 12 - UNIT 1
 MAIN FLOOR PLAN
 (660 SQ. FT.)

SGA 12 - UNIT 2
 MAIN FLOOR PLAN
 (660 SQ. FT.)



SGA 12 - UNIT 1
 SECOND FLOOR PLAN
 (858 SQ. FT.)

SGA 12 - UNIT 2
 SECOND FLOOR PLAN
 (858 SQ. FT.)



SGA 12 - UNIT 1
 OPTIONAL LOWER LEVEL FLOOR PLAN
 (FINISHED AREA = 435 SQ. FT.)

SGA 12 - UNIT 2
 OPTIONAL LOWER LEVEL FLOOR PLAN
 (FINISHED AREA = 435 SQ. FT.)

ELEVATIONS



Elevation A



Elevation B

Renderings shown with Optional Additional Exterior Lighting



Elevation C

Purchaser Initials: _____