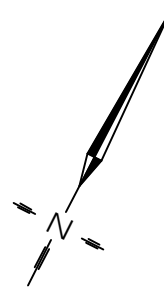


Subdivision Application Map Showing Phasing

This document is not an official survey unless it bears the signature (in blue ink) and/or seal of the Manitoba Land Surveyor whose authority it was prepared under. It is at the discretion of Barnes & Duncan to issue additional copies of documents on a case by case basis.

Note:
This map has been prepared for subdivision application purposes only.

This is not a final survey.

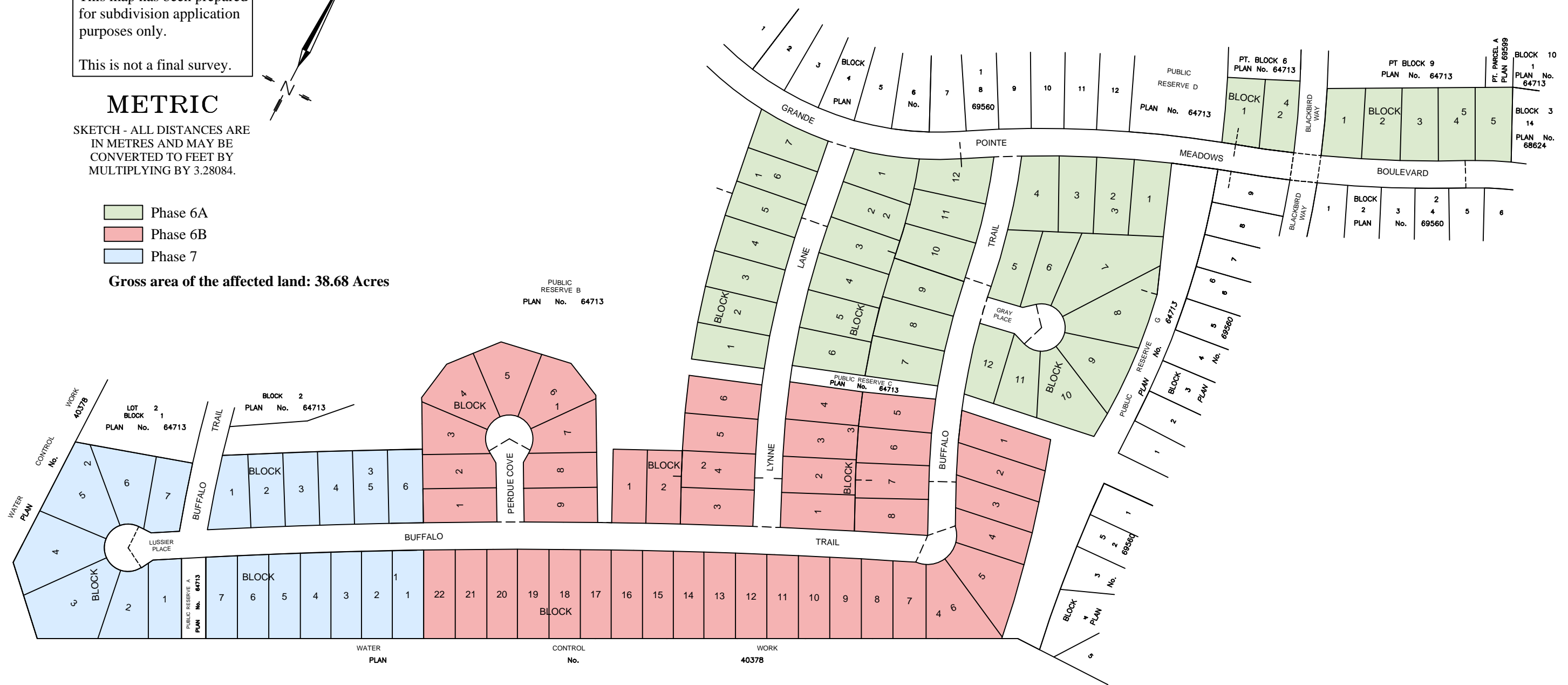


METRIC

SKETCH - ALL DISTANCES ARE IN METRES AND MAY BE CONVERTED TO FEET BY MULTIPLYING BY 3.28084.

- Phase 6A
- Phase 6B
- Phase 7

Gross area of the affected land: 38.68 Acres



Prepared by:
Leslie N. McLaughlin, M.L.S.
18th day of April, 2024



6 Donald Street
Winnipeg, MB
R3L 0K6

180-A, 5th Street
Morden, MB
R6M 1C9

Our File: 23-0868
Acad dwg: 23-0868-1-SAM
Field Book: N/A
Drafter: IR

This document is not an official survey unless it bears the signature (in blue ink) and/or seal of the Manitoba Land Surveyor whose authority it was prepared under. It is at the discretion of Barnes & Duncan to issue additional copies of documents on a case by case basis.

Subdivision Application Map Showing Phase 6A

Being Part Block 6 and Block 9, Lots 1 and 2, Block 17, Lots 1 & 2 Block 18, Plan 64713 and Part Parcel A, Plan 69599

Note:
This map has been prepared for subdivision application purposes only.

This is not a final survey.



METRIC

SKETCH - ALL DISTANCES ARE IN METRES AND MAY BE CONVERTED TO FEET BY MULTIPLYING BY 3.28084.



Dimensions shown are in metres.
Land affected by this proposal is shown bordered thus -----
Gross area of the affected land: 14.43 Acres

Prepared by:
Leslie N. McLaughlin, M.L.S.
18th day of April, 2024

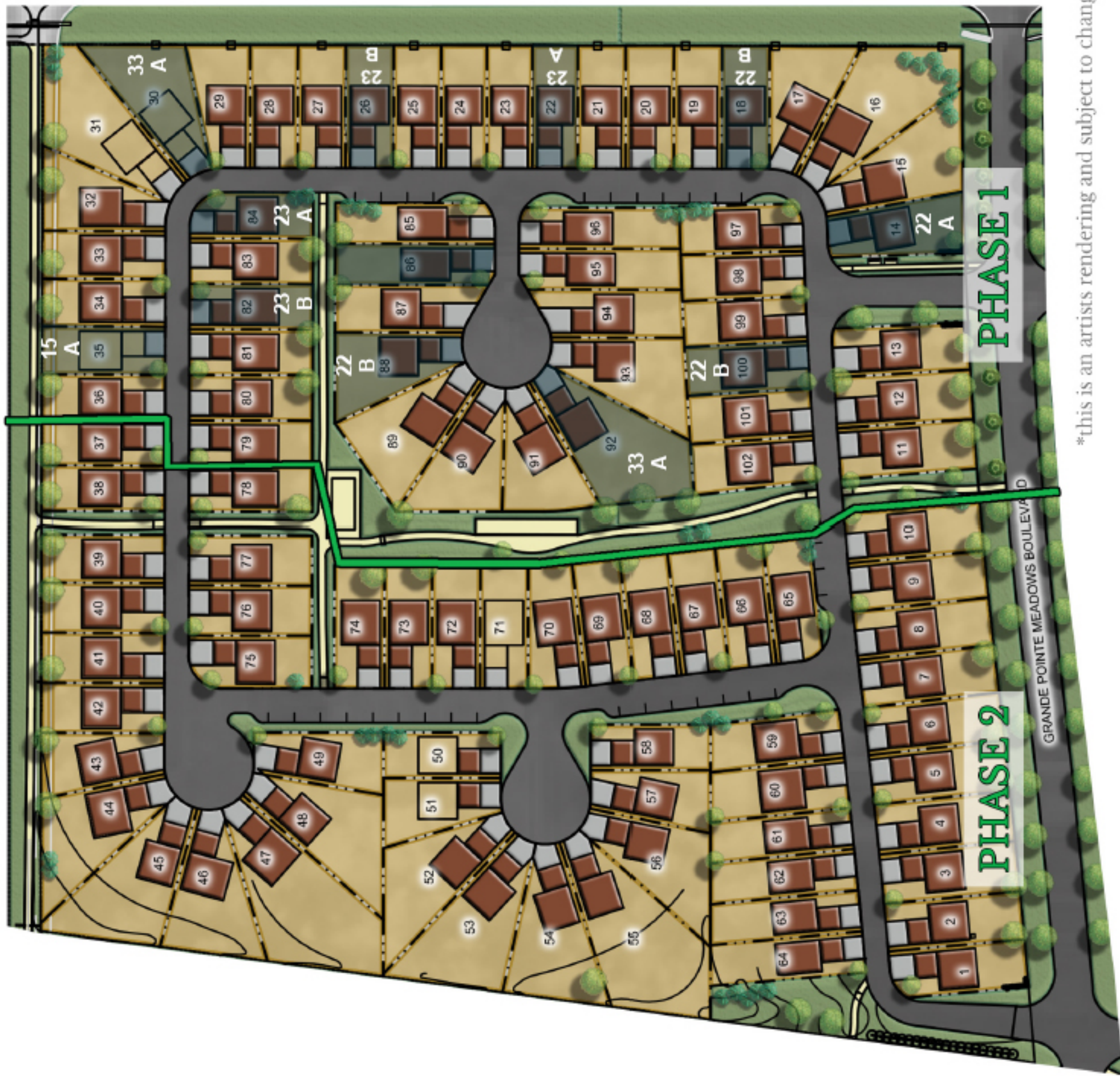
BARNES & DUNCAN 1906
SURVEYING, ENGINEERING & PLANNING
6 Donald Street Winnipeg, MB R3L 0K6
180-A, 5th Street Morden, MB R6M 1C9

Our File: 23-0868
Acad dwg: 23-0868-1-SAM
Field Book: N/A
Drafter: IR



The Villas

Grande Pointe Meadows



*this is an artists rendering and subject to change