



# THE WESTON

## BROADVIEW HOMES

Broadview Homes has been building new family homes in the Winnipeg market for over 30 years. Choosing a Broadview Home is a great fit for homebuyers who are looking for affordability without any sacrifice of quality. We are committed to providing a great experience for our customers throughout the selection and building process continuing

after moving into the home. Our experts are here to answer your questions and make your new home process as quick and easy as possible at every stage. Our homes are available in many family friendly communities throughout Winnipeg for you to choose from. Start your next move now with Broadview Homes!



Elevation B – Concept Only

Photos shown are of various models with upgraded features.

As part of the new home building process, Broadview Homes offers every home buyer a three-hour personal consultation with a Certified Interior Decorator in the 4,000 square foot design centre, designQ.



Plans and prices are subject to change without notice. Exterior renderings are for marketing purposes and may vary from actual standards included. The builder reserves the right to change material or specifications without notice, but guarantees that change will be of equal or greater value. Room dimensions are approximate. Windows in cantilevers and size of cantilevers are subject to side yard restrictions. Garage dimensions are exterior. Illustrations are artist concepts and may vary. (02/2024 )

P 204-254-9265 F 204-233-2518 E [broadviewhomeswpg@qualico.com](mailto:broadviewhomeswpg@qualico.com)

[BroadviewHomesWPG.com](http://BroadviewHomesWPG.com)

## HOME FEATURES

Bedroom: 2 or 3  
Bath: 2

Total: 1,263 Sq. Ft.

Elevation A B – Concept Only

DG 22– 2024



# THE WESTON

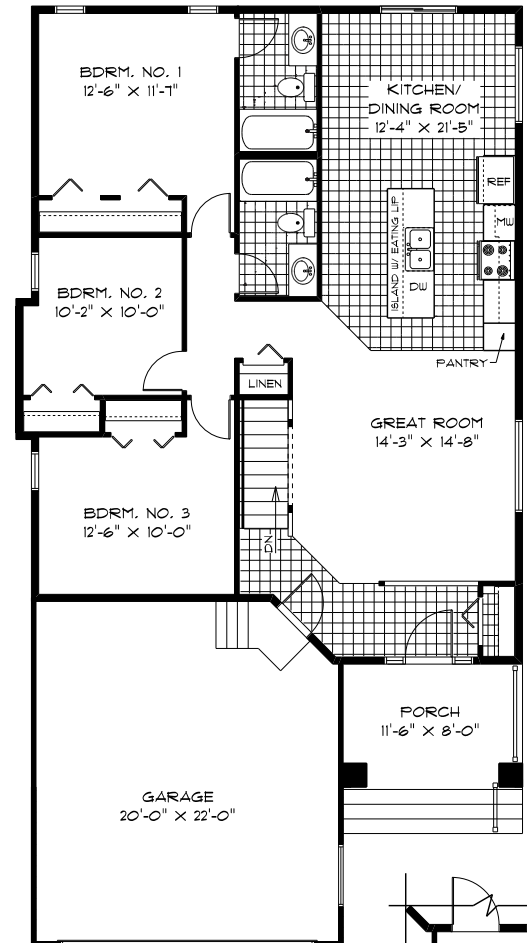
## HOME FEATURES

Bedroom: 2 or 3  
Bath: 2

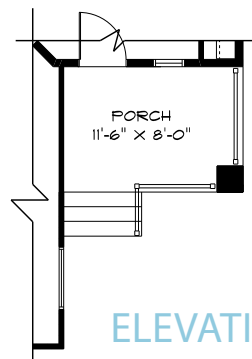
Total: 1,263 Sq. Ft.

Elevations A B – Concept Only  
DG 22- 24

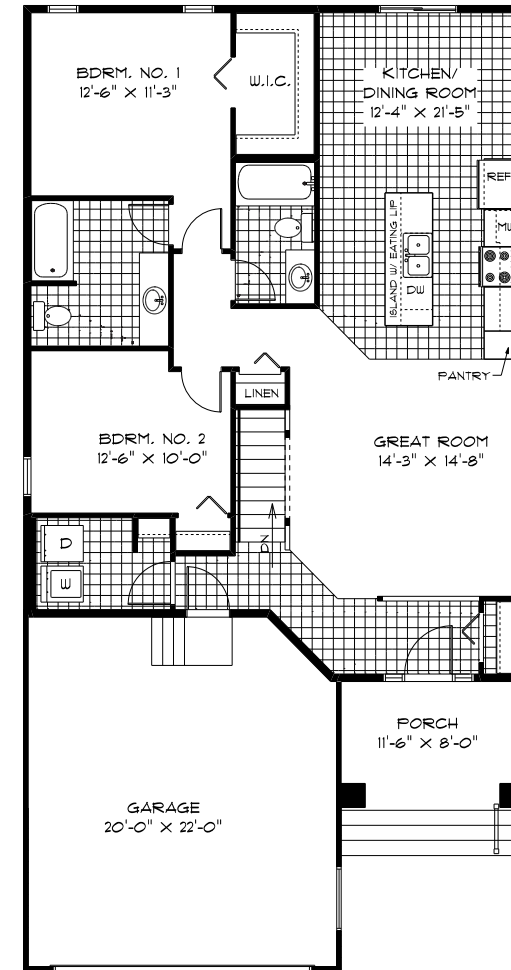
- Front Attached Garage & Covered Concrete Porch
- 9' Main Floor Ceiling Height
- Galley Kitchen with Large Island and Pantry
- Rear Patio Door Off Dining Room
- Private Ensuite in Primary Bedroom
- Optional 2 Bedroom Layout Featuring a Main Floor Laundry Room
- Optional 2 Bedroom Layout with a Deluxe Ensuite Featuring a Soaker Tub and Glass Shower
- Lower Level of Home Optional to Develop
- 1-2-5-10 Year New Home Warranty Program



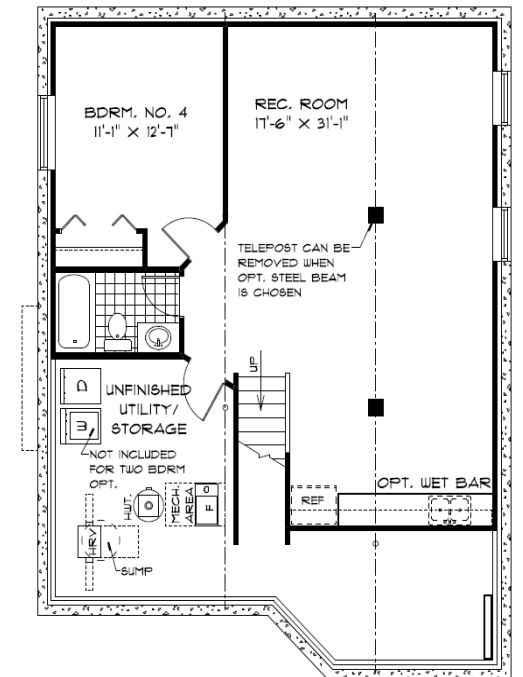
MAIN FLOOR PLAN  
1,263 Sq. Ft.



ELEVATION B PORCH

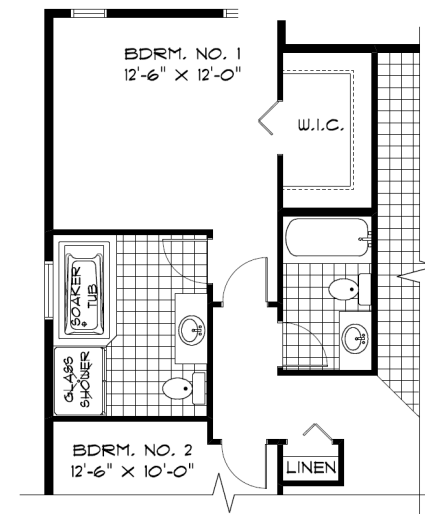


OPTIONAL 2 BEDROOM MAIN FLOOR  
1,254 Sq. Ft.



OPTIONAL LOWER LEVEL FLOOR PLAN

Finished Area: 735 Sq. Ft.



OPTIONAL DELUXE ENSUITE (AVAILABLE WITH 2 BEDROOM MAIN FLOOR PLAN)

1,281 Sq. Ft.

PURCHASER INITIALS: \_\_\_\_\_



## ELEVATIONS:

Elevation Shown is Concept Only and May Vary from Standard.

Shown with Optional Exterior Lighting & Features