

# THE EASTON

## HOME MODEL



Elevation A - Concept Only



Photos shown are of the DG 48 model with various upgrades.

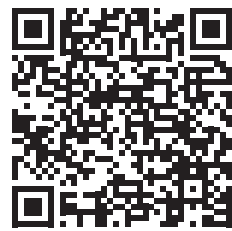
## BROADVIEW HOMES

Broadview Homes has been a home builder in Winnipeg for over 30 years. We believe in building a quality home that achieves affordability, without sacrificing style and tradition! We are committed to providing a fulfilling customer experience before, during, and after the build process!

Our experts are here to answer your questions and make the new home building process as stress-free and exciting, as possible. We build in numerous family-friendly communities in Winnipeg and surrounding areas. Start building your dream home with Broadview Homes today!

## DESIGNQ

As part of the new home building process, Broadview Homes offers every home buyer a three-hour personal consultation with a Certified Interior Decorator in the 4,000 square foot design centre, designQ.



Plans and prices are subject to change without notice. Exterior renderings are for marketing purposes and may vary from actual standards included. The builder reserves the right to change material or specifications without notice, but guarantees that change will be of equal or greater value. Room dimensions are approximate. Windows in cantilevers and size of cantilevers are subject to side yard restrictions. Garage dimensions are exterior. Illustrations are artist concepts and may vary. (09/2024)

P 204-254-9265 F 204-233-2518 E [broadviewhomeswpg@qualico.com](mailto:broadviewhomeswpg@qualico.com)



[BroadviewHomesWPG.com](http://BroadviewHomesWPG.com)

## HOME FEATURES

**Bedrooms: 4**

**Bathrooms: 3**

**Total : 2,126 Sq. Ft.**

**Elevation A**

**Rendering - Concept Only**

**DG 48 - 2024**



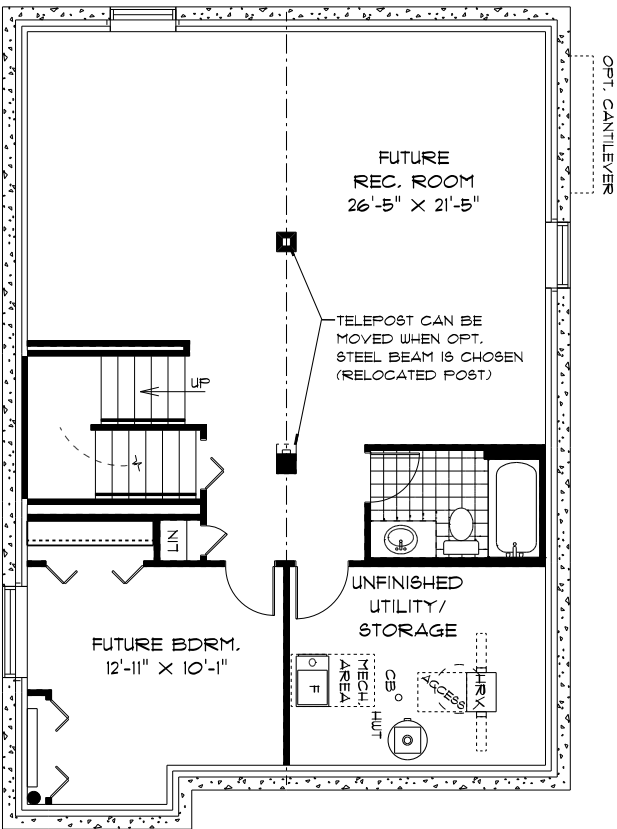
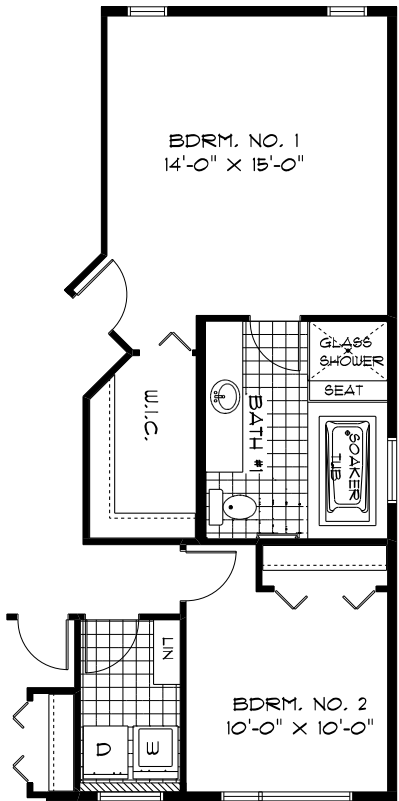
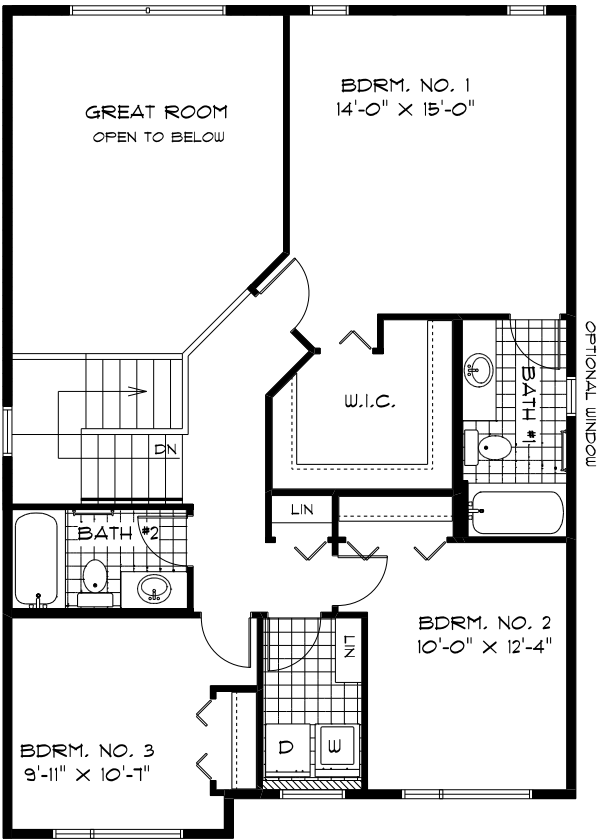
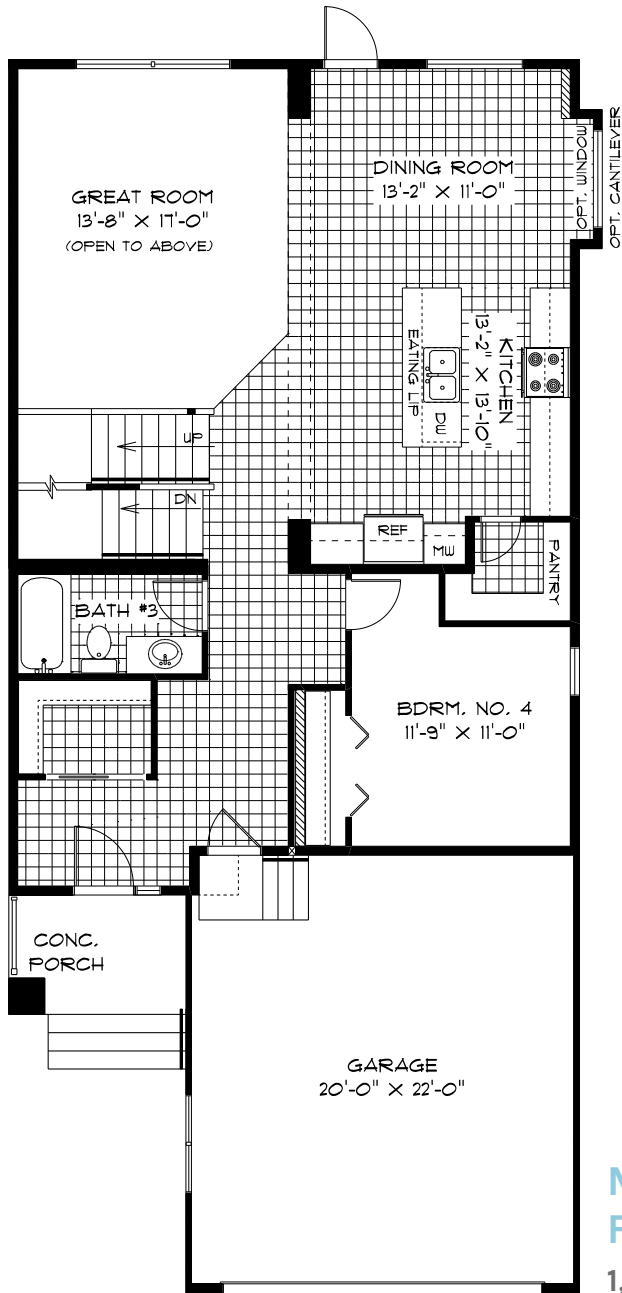
# THE EASTON

HOME MODEL

## HOME FEATURES

Bedrooms: 4  
Bathrooms: 3  
Total: 2,126 Sq. Ft.  
Elevation A – Concept Only  
DG 48 - 2024

- Double Attached Garage
- Covered Concrete Front Porch
- 9' Main Floor Ceiling Height
- Kitchen with Island & Walk-In Pantry
- Main Floor Bedroom & Full Bath
- Opt. Window & Cantilever at Dining Room
- Great Room Open to Above
- Second Floor Laundry with Linen Shelves
- WIC & Ensuite in Primary Bedroom
- Optional Deluxe Ensuite Featuring a Soaker Tub & Glass Shower with Seat
- Lower Level of Home Optional to Develop



### ELEVATION:

Elevation Shown is Concept Only  
and May Vary from Standard.

Shown with Optional Exterior  
Lighting & Features

\*Please refer to our Standard  
Specifications for type of flooring  
included in each room/living space.

PURCHASER INITIALS: \_\_\_\_\_