



# THE ATWOOD

HOME MODEL



A QUALICO Company

Elevation A - Concept Only



Photos shown are of the DG 45 model with various upgrades.

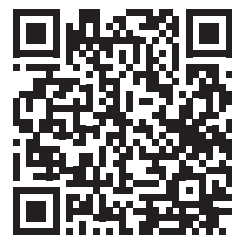
## BROADVIEW HOMES

Broadview Homes has been a home builder in Winnipeg for over 30 years. We believe in building a quality home that achieves affordability, without sacrificing style and tradition! We are committed to providing a fulfilling customer experience before, during, and after the build process!

Our experts are here to answer your questions and make the new home building process as stress-free and exciting, as possible. We build in numerous family-friendly communities in Winnipeg and surrounding areas. Start building your dream home with Broadview Homes today!

## DESIGNQ

As part of the new home building process, Broadview Homes offers every home buyer a three-hour personal consultation with a Certified Interior Decorator in the 4,000 square foot design centre, designQ.



Plans and prices are subject to change without notice. Exterior renderings are for marketing purposes and may vary from actual standards included. The builder reserves the right to change material or specifications without notice, but guarantees that change will be of equal or greater value. Room dimensions are approximate. Windows in cantilevers and size of cantilevers are subject to side yard restrictions. Garage dimensions are exterior. Illustrations are artist concepts and may vary. (06/2026)



P 204-813-6874 F 204-235-0151 E [broadviewhomeswpg@qualico.com](mailto:broadviewhomeswpg@qualico.com)

[BroadviewHomesWPG.com](http://BroadviewHomesWPG.com)

## HOME FEATURES

**Bedrooms: 4 or 5**

**Bathrooms: 3**

**Total : 1,966 Sq. Ft.**

**Elevations A B**

**Renderings - Concept Only**

**DG 45 - 2026**

# THE ATWOOD

HOME MODEL

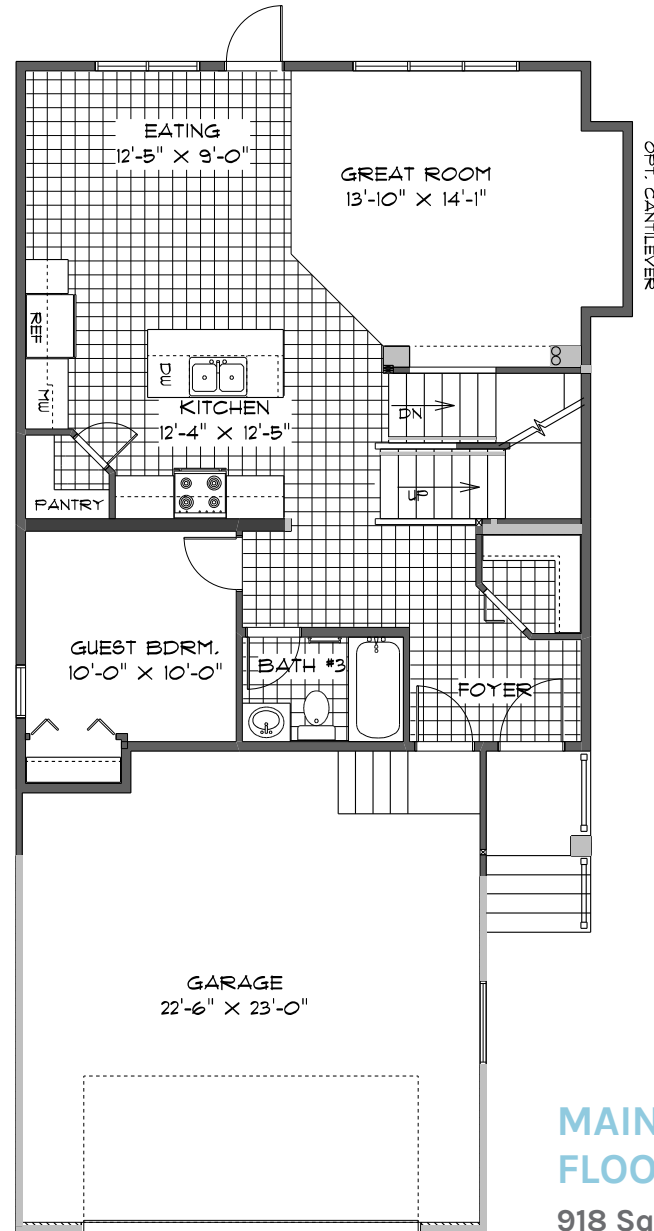
## HOME FEATURES

Bedrooms: 4 or 5  
Bathrooms: 3

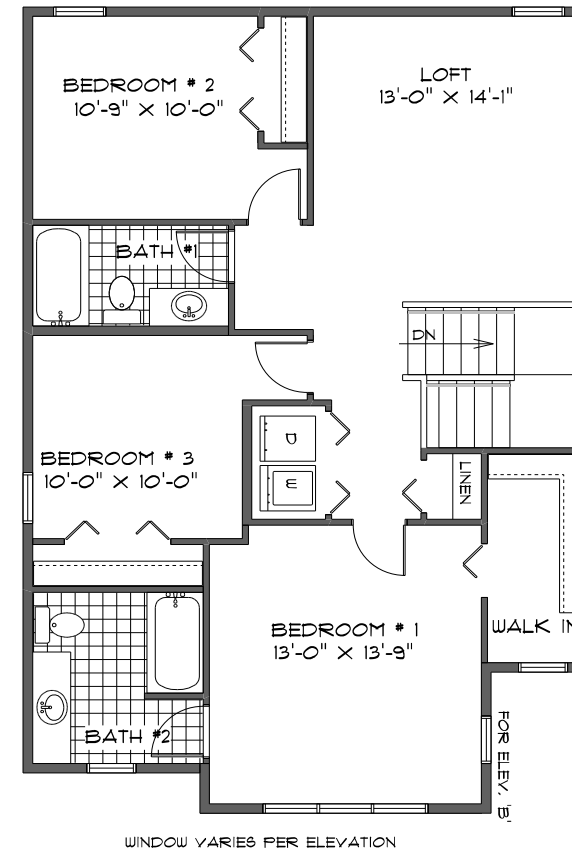
Total: 1,966 Sq. Ft.

Elevations A B - Concept Only  
DG 45 - 2026

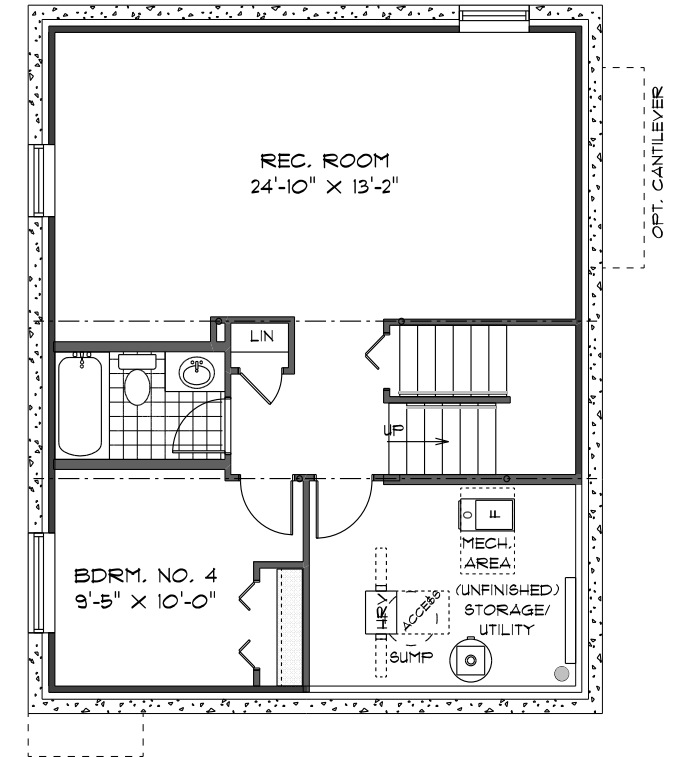
- Double Front Attached Garage
- Main Floor Guest Bedroom and Full Bathroom
- Large Corner Kitchen with Island & Corner Pantry
- Optional Cantilever in Great Room
- Rear Garden Door at Eating Area
- Primary Bedroom with Private Ensuite and WIC
- Versatile Second Floor Loft or Optional Bedroom
- Convenient Second Floor Laundry
- Lower Level Optional to Develop



**MAIN FLOOR PLAN**  
918 Sq. Ft.



**SECOND FLOOR PLAN**  
1,048 Sq. Ft.



**OPTIONAL LOWER LEVEL FLOOR PLAN**

Finished Area: 584 Sq. Ft.



### ELEVATIONS:

Elevations Shown are Concept Only and May Vary from Standard.

Shown with Optional Exterior Lighting & Features

\*Please refer to our Standard Specifications for type of flooring included in each room/living space.

PURCHASER INITIALS: \_\_\_\_\_